

A person is seen from the back, holding a yellow handheld device with a screen and a keypad. The background is a blurred indoor space, possibly a store or office. A teal semi-transparent banner is overlaid on the image, containing the title and date.

Tips to Getting Your Business Ready to Re-Open In Person and Keeping Those Already Working In-Person Safe

May 14, 2020



Welcome to NAEM

A professional community where you can get the solutions you need to make an impact

Benchmark

Benchmark your programs via events, online learning, research and executive networks

Learn

Learn tools & techniques to execute your strategy and be inspired by peers

Build

Build a network of peers whose experience can help you solve your challenges

NAEM Connects EHS & Sustainability Leaders

120

Corporate Members

4,200

Individual Members

60

Affiliate
Members

Reaching a community
of Practice

25K+



Delivering Knowledge & Professional Wisdom

Peer Forums



Research Insights



Targeted Networking



Actionable strategies to empower
EHS&S leaders to make an impact



EHS Operational Excellence – Virtual Conference

Sustaining EHS During Times of Business Interruption

May 21st

- Featuring Speakers on:
 - Lessons Learned from the Frontlines Running A Cross Functional COVID-19 Taskforce
 - Spotlight on Mental Health & Wellness Best Practices During COVID-19
 - The Urgent Call for Leaders - Keeping EHS Steady and Effective During Crisis
- Buzz Sessions to Network & Problem Solve with Peers



Information & Registration on-line
www.naem.org/opex



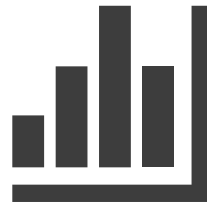
NAEM'S Special Resources for COVID-19



Webinars



Publications



Quick Polls



Drop-In Calls



Today's Presentation

Thank You to Our Sponsor



Introductions



About our Speakers



Kurt Beil

Northern Hemisphere
Environmental Market Leader



Simon Kaye

Executive Advisor & Lead for
GHD COVID-19 Response



Bob Armacost

North America Digital
Leader

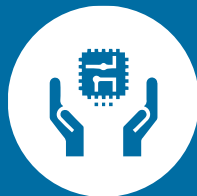
Session overview



Focus on
Reopening
Business



Organizational
Imperatives



Digital
Enables
the Future



Moving
Forward to
Resiliency

**Focus on reopening
business**



FOCUS: Preventing further shutdown

Meeting our “New Reality” by planning for the future and how together, we safely reopen the economy and get back to work.

- Remote working options become standard
- Priority in assuring safety and social distancing
- Re-establishing confidence and trust
- Renewed focus on digital transformation and automation
- Refreshed resiliency strategies

Priorities to advance to goal

- **Health, Safety, Environment.** Get people back to work and maintain health while mitigating the risk of recurring closure and business impacts
- **Business continuity.** Develop approach to continue business operations for the next 6-12 months, until a vaccine is developed and effective
- **Innovative thinking.** Critical to future success and resilience
- **Dynamic adaptation.** Analyze, adapt, and adjust to evolving conditions

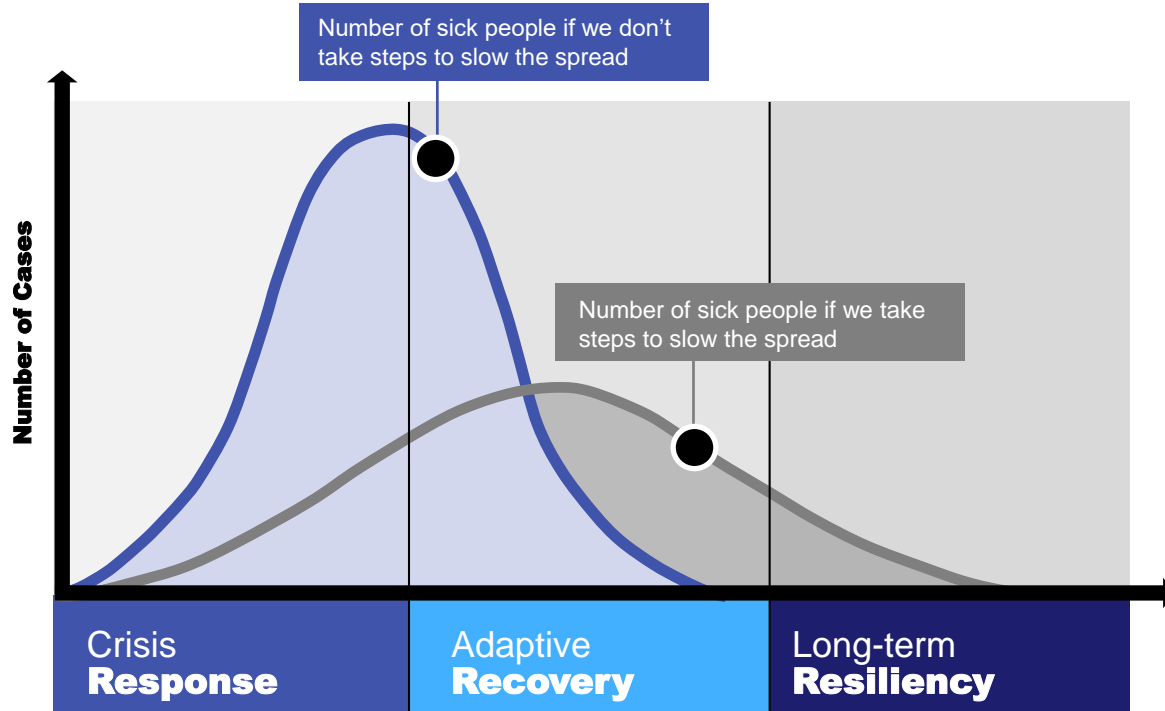


> **Respond** with speed and agility

> Navigate **recovery** on a stable path and pivot to heal and regrow as we look ahead

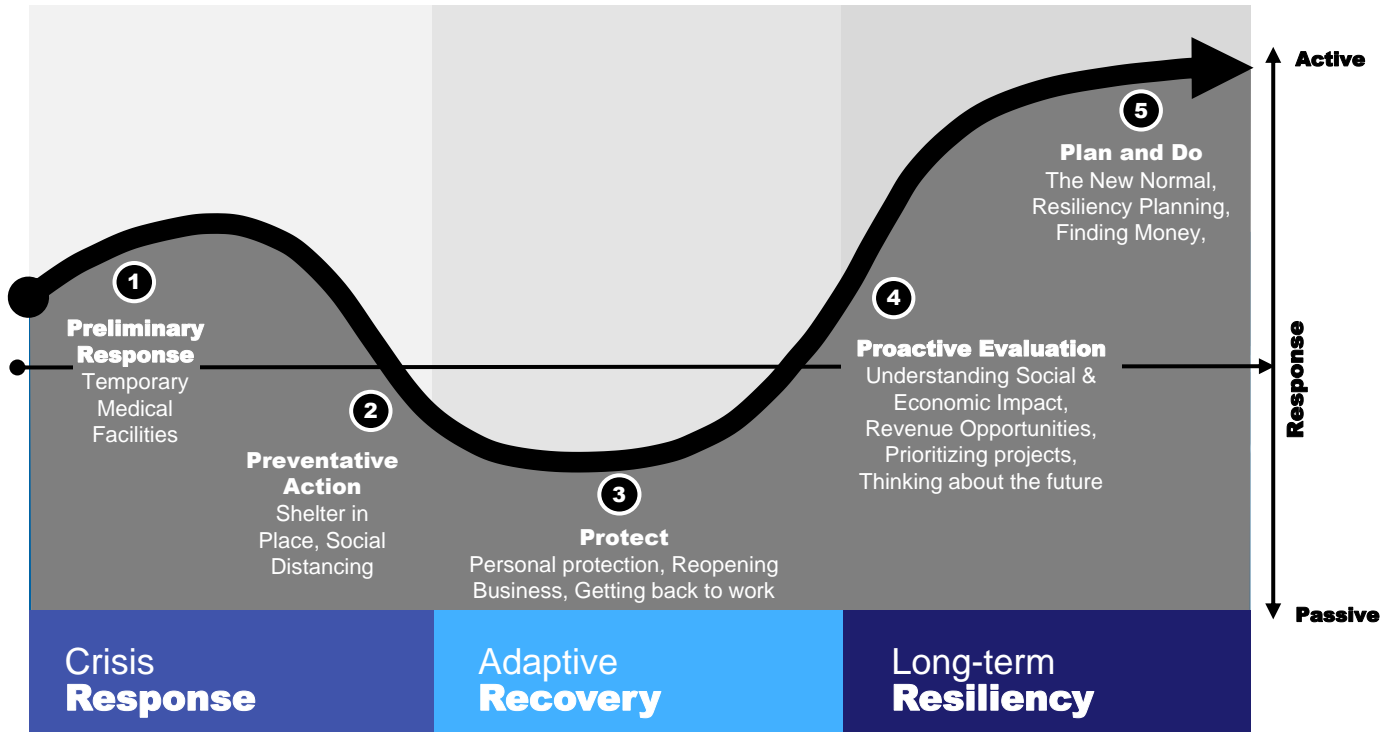
> Uphold **resiliency** through a promise to learn from these exceptional times for a shared vision of our future

Moving from response to resiliency



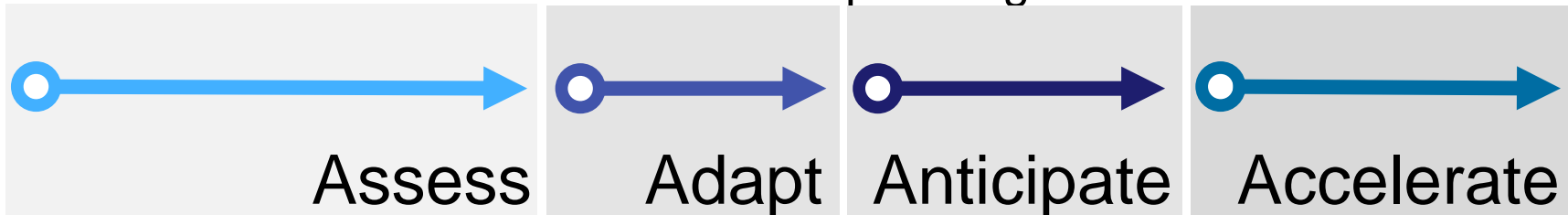
- Safely re-establish work environment / facilities
- Communicate plan and goals
- Get staff back to work and maintain health while mitigating the risk of recurring closure and business impacts
- Use technology to help us make this happen safely

Market indications: Moving towards recovery and resiliency



People + Technology = Fluid Business

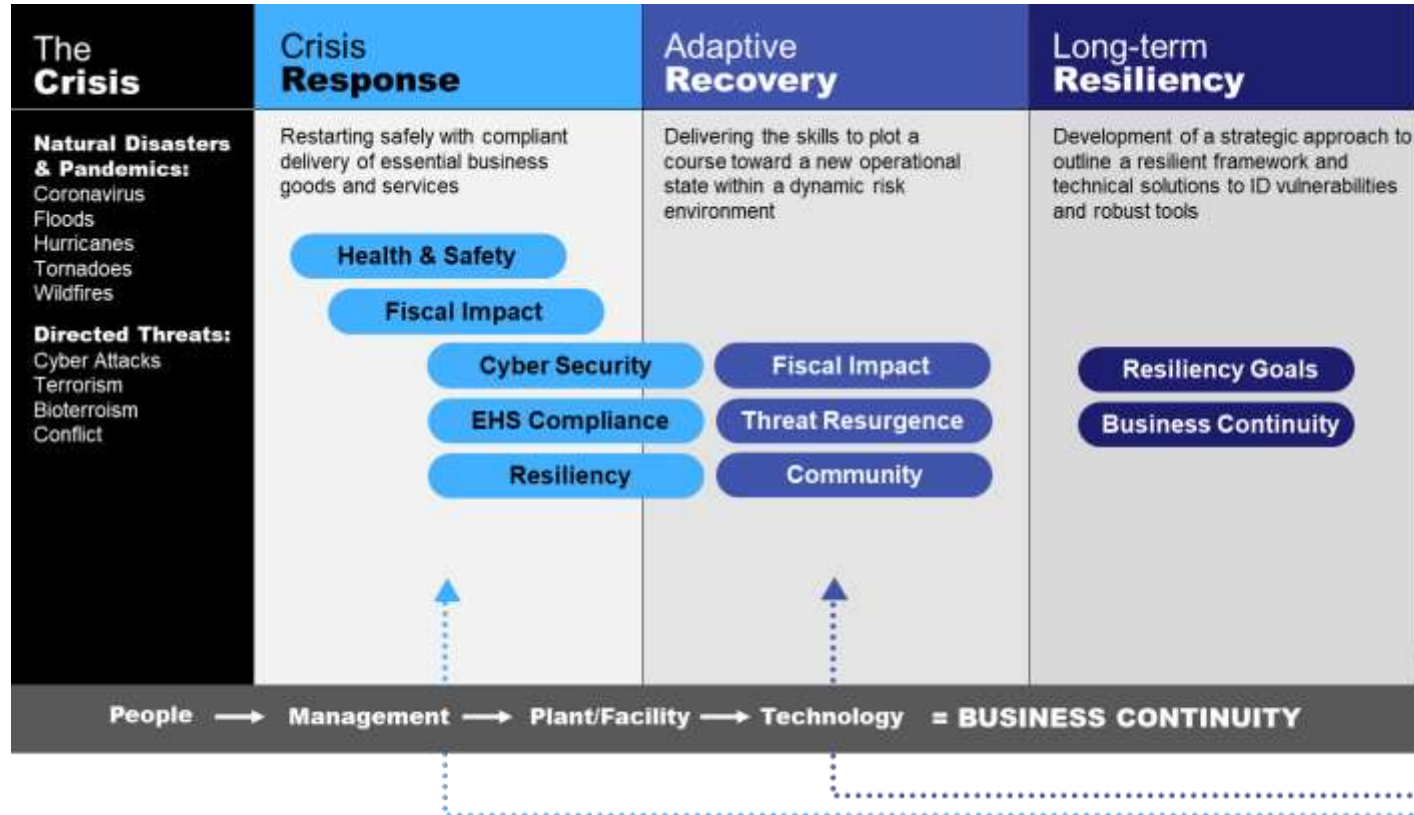
- Establish a framework that enables agility and ability to quickly pivot business functions based on rapidly changing conditions.
- Assess the past, adapt for the current, anticipate the future to create a model that examines all business vulnerabilities (e.g., scenario gaming)
- Accelerate digital transformation, automate processes, and integrate across business functions
- Create supply chain and value chain balance and mitigate risks/vulnerabilities with resilience planning



Operational Imperatives



Creating a path to a new resilient business



In the headlines...

Smithfield closes South Dakota pork plant due to coronavirus

April 12, 2020



AP

General

Smithfield Foods To Reopen Sioux Falls, South Dakota Facility After CDC Conducts Thorough Site Inspection and Affirms Company Meets or Exceeds All Employee Health and Safety Guidance

May 5, 2020

www.smithfieldfoods.com/press

SMITHFIELD, Va., May 06, 2020 (GLOBE NEWSWIRE) -- Smithfield Foods, Inc. today announced that it

Tesla and Elon Musk reopen California facility, defying orders meant to stem coronavirus spread

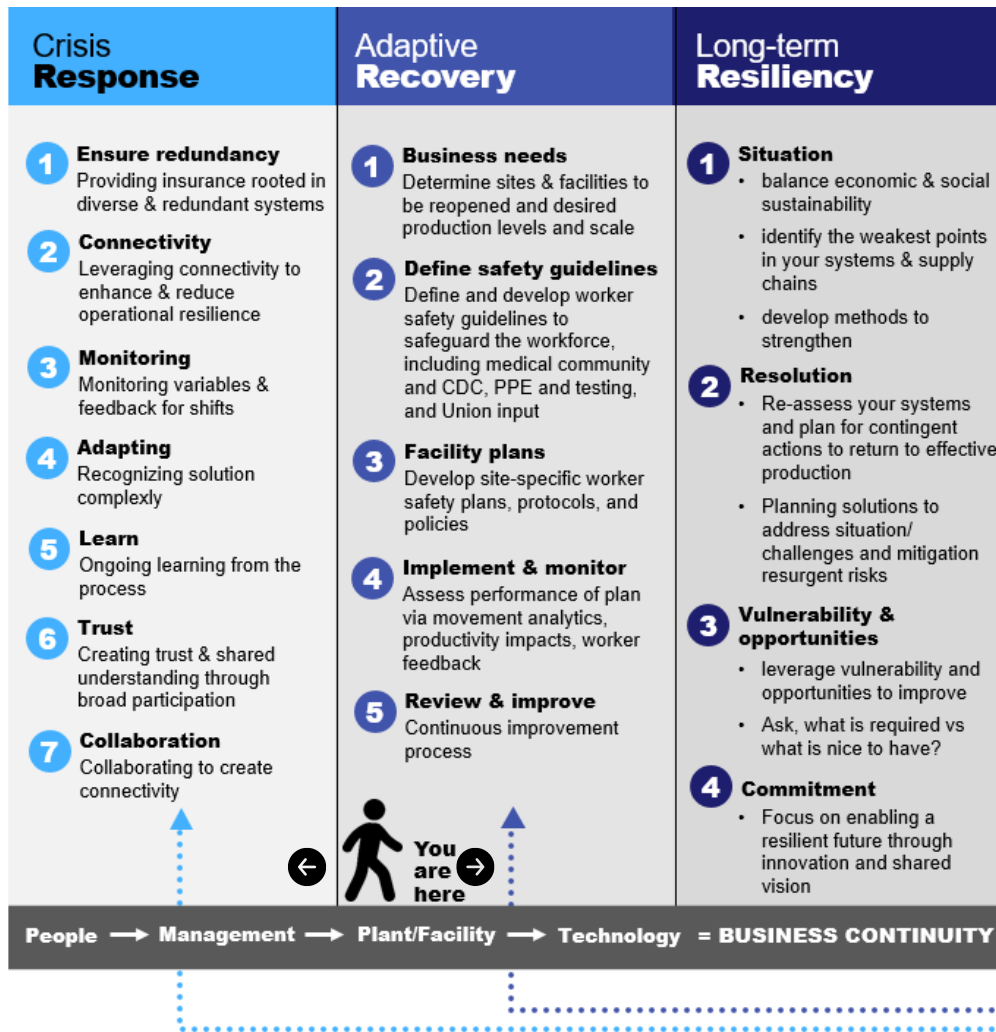


By Ryan Fung, CNN Business

Updated 9:17 AM ET, Sat May 12, 2020

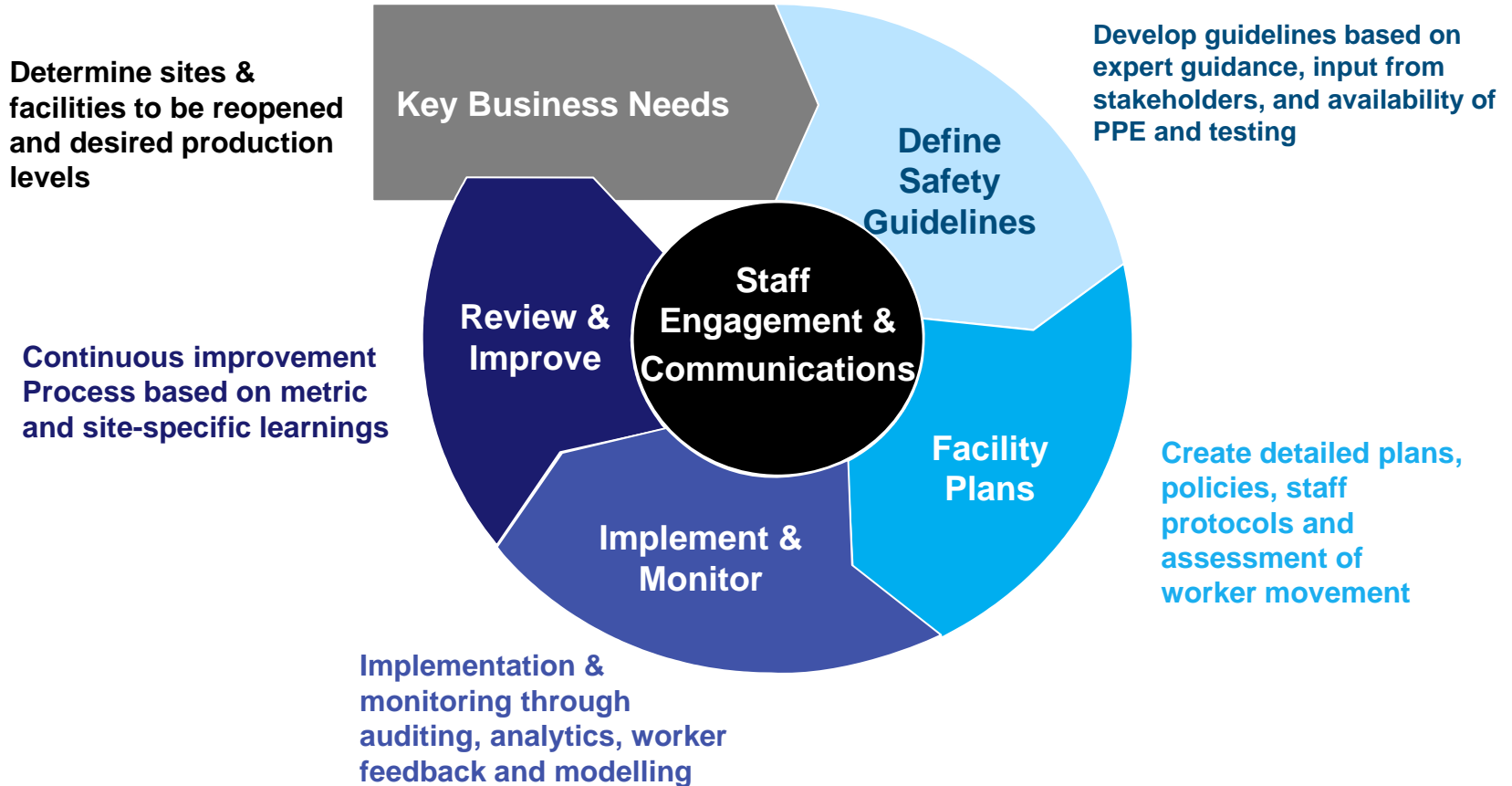


CNN BUSINESS

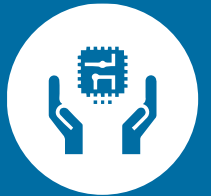


Developing a plan to **enable continuous delivery** of essential goods and services in the face of future threats.

Adaptive organizational framework



Digital Enables the Future



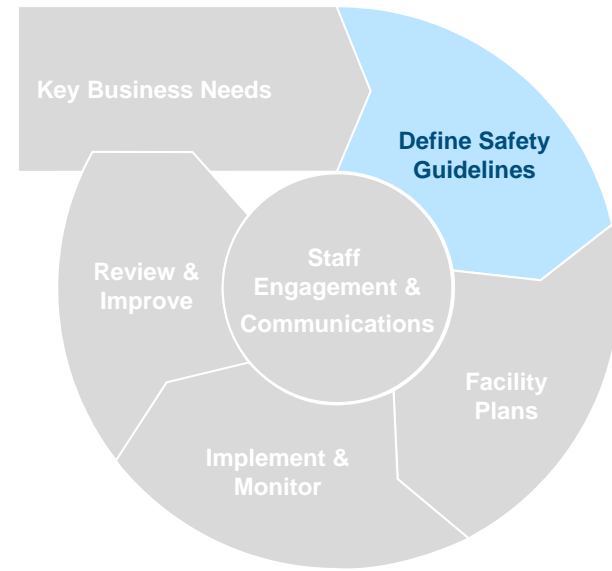
Define safety guidelines

- Updates from CDC and medical community
- Worker safety guidelines
- Access to PPE, testing, treatment, etc.
- Input from stakeholders

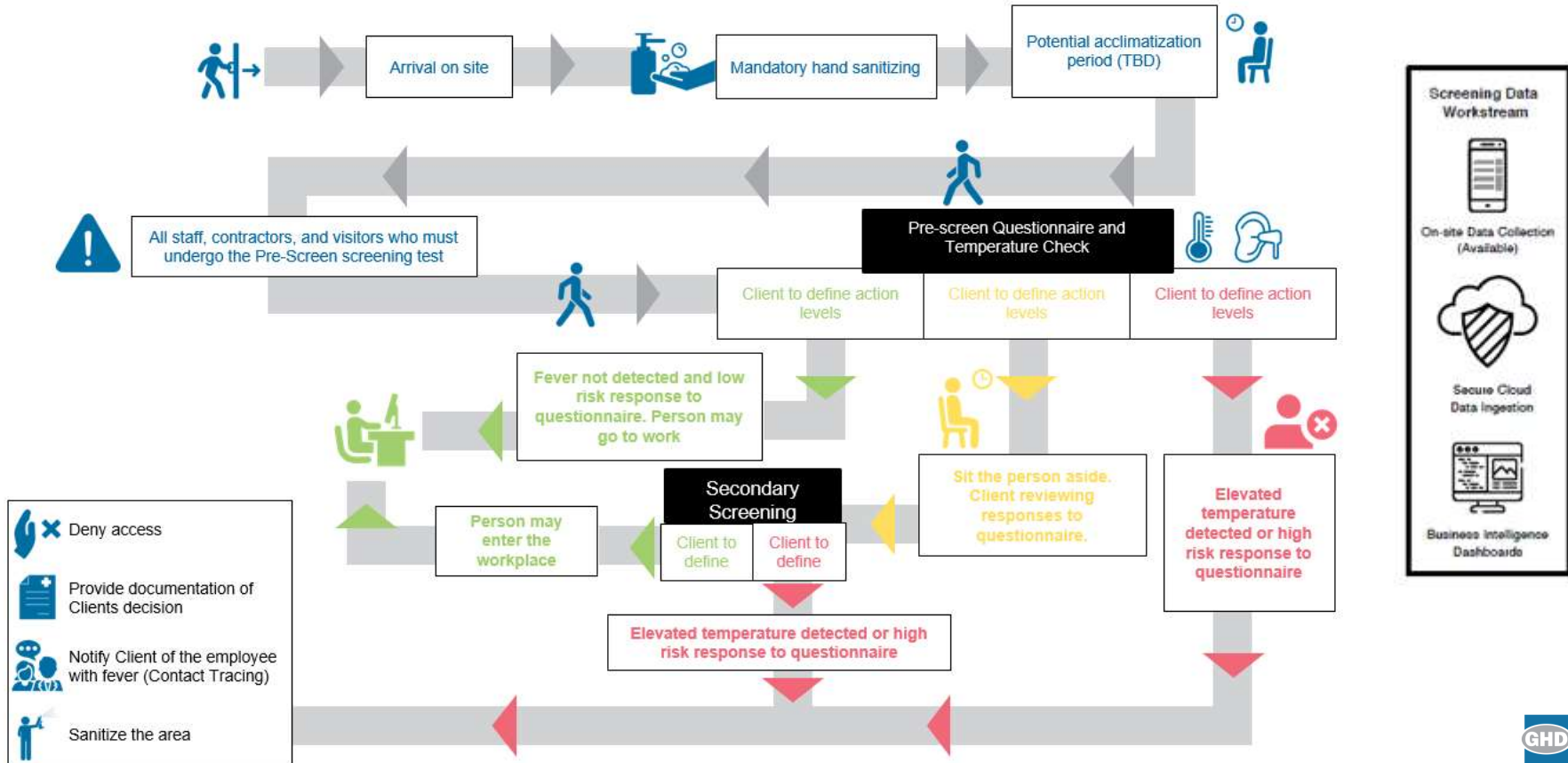


Digital enablers:

- Assessment and contact tracing tools
- Thermal scanning
- Analytics



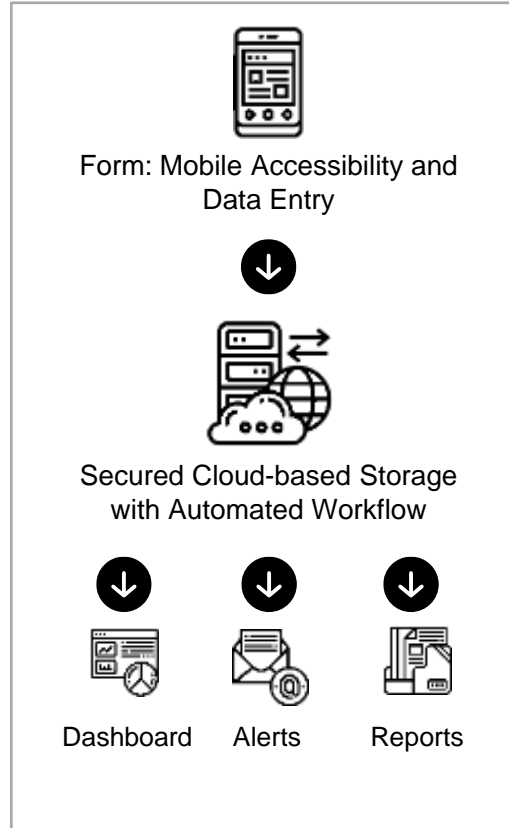
Workforce “screening to cleaning”



Workforce contact tracing

→ Leveraging a secured cloud-based solution in response to monitor, detect, prevent the spread of Covid-19

- Data Storage Platform
- Field data collection
- Accessibility and Quick Deployment
- Data hosting
- Data visualization and real-time reporting



Workforce entry temperature scanning

Industrial Hygiene evaluates and screens workers using thermal screening technologies

Human Oversight and Entrance Check-in

- Experienced staffing resources to manage
- Check-point data capture
- Thermometer check-in and entrance clearance
- PPE Protocol and efficacy

Use of thermal scanning technology

- Detects body temperature thru handheld or fixed cameras
- Can also be affixed to gates/barriers

Robust and efficient screening process

- Process and staff to conduct secondary screening
- Process to handle/report positive results and contact tracing
- Potential use of facial recognition or automated links to employee badges



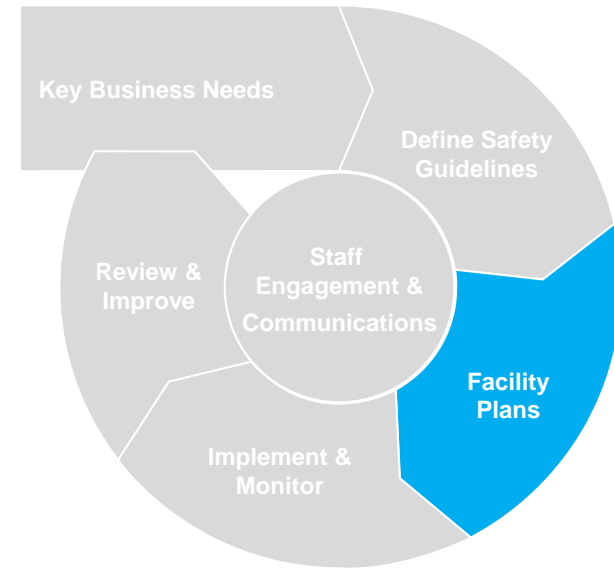
Facility plans

- Site-specific worker safety plans
- Distancing policies
- Cleaning and disinfecting
- Worker safety guidelines
- Protocols and site modelling



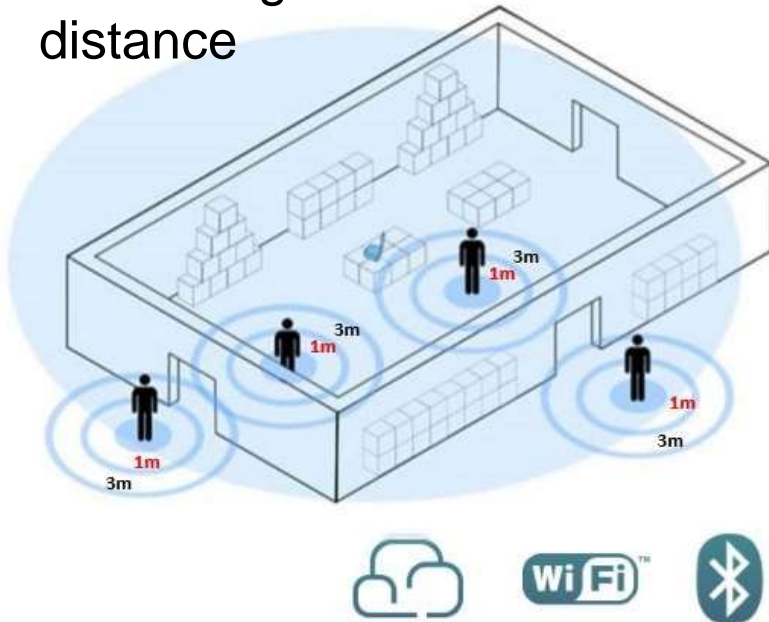
Digital enabler:

- Social distancing management

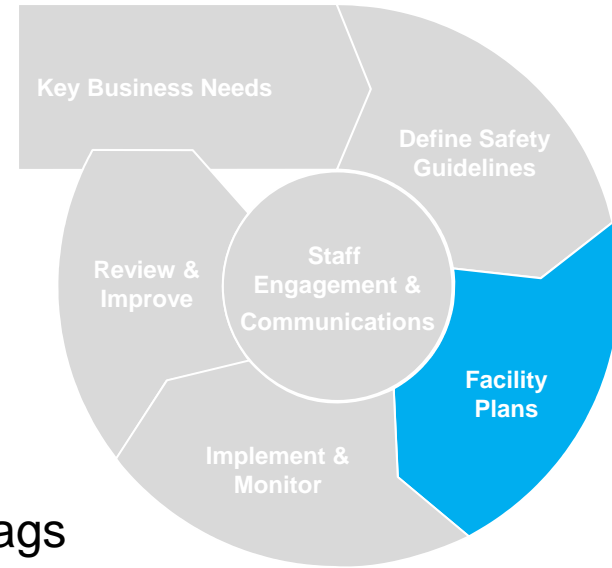


Social distance tracking

Real-time monitoring of distance



Bluetooth card tags and beacon



Implement & monitor

- Worker feedback and health impacts
- Worker movement analytics
- Productivity impacts
- Compliance monitoring and reporting



Digital enabler:

- Data management and reporting



Fit testing data management reporting

PPE and Respirator Fit Training Certification (OSHA)

Fit testing documentation required for OSHA compliance

- Desire to complete digital documentation for facilitated data flow and client-viewed environmental friendliness

Forms with multiple data table cross-referencing for increased data quality control

- Utilized existing code and formats with customization for client's needs
- Data entry by field staff of respiratory fit testing
- Output → email with single page summary PDF of fit testing record per test
- Data able to be exported in multiple formats for data management requirements
- Immediate client access to data viewing via data portal website



Review & improve

- Worker feedback and health impacts
- Worker movement analytics
- Productivity impacts
- Compliance monitoring and reporting



Digital enabler:

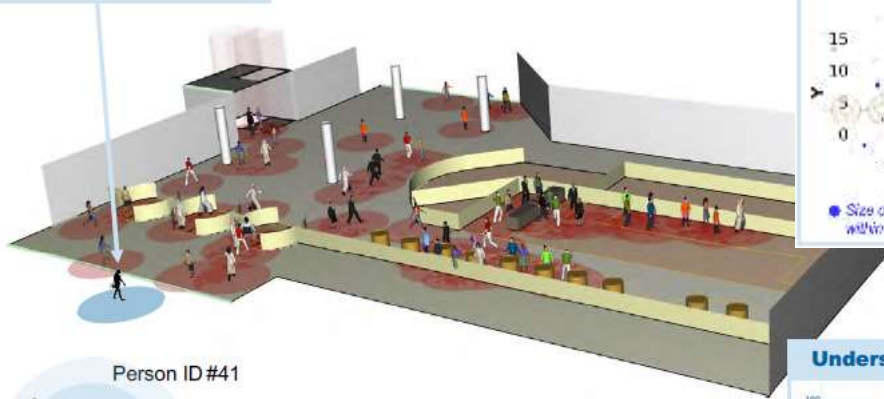
- People movement modelling



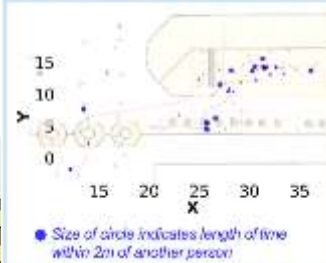
People modeling

Proof of Concept: Workplace Arrival Scenario 1

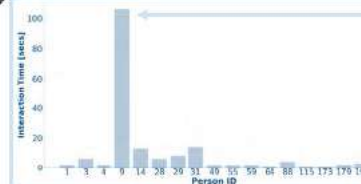
Track any individual
in the simulation



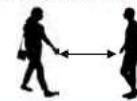
Plot route and interactions



Understand who they interacted with and for how long



Person #41 spent 106 seconds
within 2 metres of Person #9



Key Business Needs

Define Safety
Guidelines

Review &
Improve

Staff
Engagement &
Communications

Implement &
Monitor

Facility
Plans

Stakeholder engagement & communications

to **proactively engage** your leadership, workforce, client/customers and supply chain partners around Covid-19 response



The Right Information



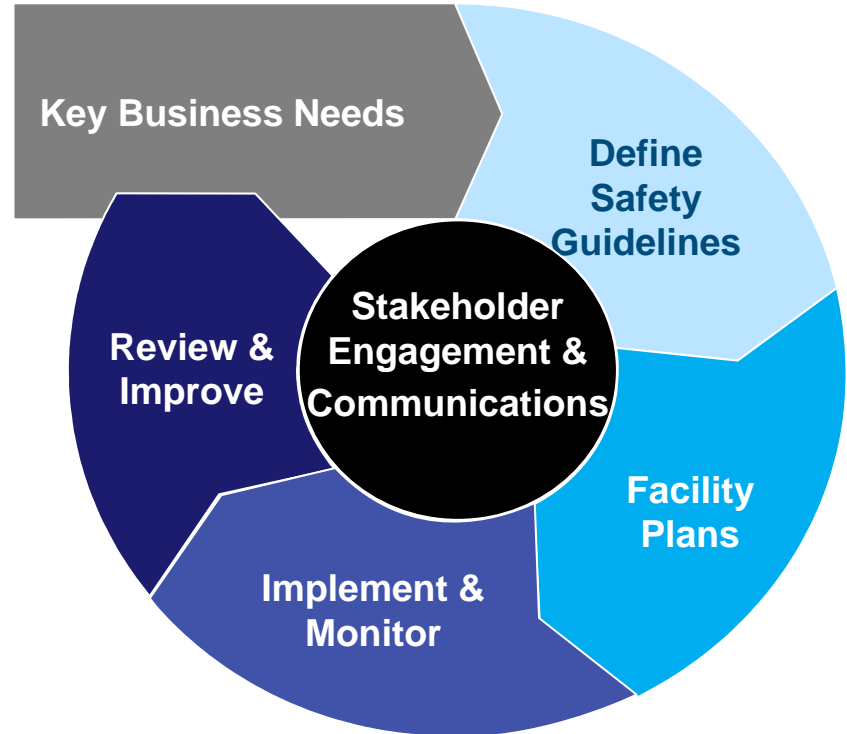
The Right Way



The Right People



The Right Time

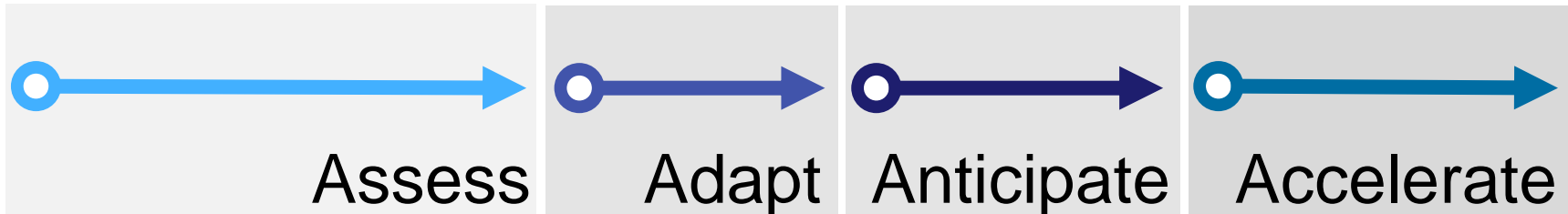


Moving forward to Resiliency



Resiliency framework

- **A strong foundation** of risk management
- **A portfolio** mindset and management model
- **A commitment** to digital transformation
- **A collaborative** approach focused on advocacy, engagement, shared value, and communications
- **A strategic** approach that embraces innovation
- **A fluid workforce** and operating environment



Q:
**What is our
“New Reality”?**

A:
**The place where
technology is
at the forefront of
workplace
productivity and
innovation**

Q&A



Kurt Beil

Northern Hemisphere
Environmental Market Leader
Kurt.Beil@ghd.com



Simon Kaye

Executive Advisor & Lead for
GHD COVID-19 Response
Simon.Kaye@ghd.com



Bob Armacost

North American Digital
Leader
Bob.Armacost@ghd.com

Thank you Q&A

Kurt Beil, Bob Armacost, Simon Kaye



More COVID-19 Webinars

Free to Everyone



Range of Topics
Managing COVID-19 within your company



Great Opportunity to Host
Showcase your Experts & Expertise

Sponsorship Information Contact: Schana@naem.org

Relevant COVID-19 Publications

- Impacts of COVID-19 on the EHS Function
- Identifying and sourcing protective & safety materials
- Managing health, safety and mental health of a remote workforce
- Ensuring the health & safety of essential, on-site employees during COVID-19
- Effectively communicating to employees to facilitate behavior changes
- Continuing operations after an exposure incident
- Assessing and articulating the business risks from COVID-19 for the C-suite

Download online at www.naem.org/research

Upcoming Webinars on EHS&S Management

May 28



*How to Build
Corporate Social
Responsibility in
Your Supply Chain*

June 11



*Effectively
Incorporating
Sustainability Into
Your Business*

July 9



*A Climate Solution
Where All Sides Win*

FREE for NAEM members

Information & Registration on-line at www.naem.org



Conferences – Online and In-person



EHS Operational
Excellence



Sustainability Impact



EHS&S Management
Forum

*Check our website for registration
and additional information about our conferences!*

www.naem.org

New & Upcoming Reports from NAEM



- 2020 EHS & Sustainability Salaries
- 2020 Trends in Emerging Tech for EHS&S
- 2020 Staffing, Structure & Budgets

All available @ [NAEM.org/research](https://naem.org/research)



Connect with NAEM!

- Online: www.naem.org
- Via email: caitlin@naem.org
- Social media:
 - Twitter: [@NAEMorg](https://twitter.com/NAEMorg)
 - Facebook: www.facebook.com/NAEM.org
 - LinkedIn: <https://www.linkedin.com/company/naem>



Thank you for Attending!



**A recording will be
available in 3-4 days.
You will receive an
email once it's posted
to our site.**



Have a safe & healthy day!

