

# Emerging From a Long Winter: Things Your Business Needs to Know to Manage Risk in a Post-COVID-19 World

June 2, 2020



# Welcome to NAEM

**A professional community where you can get the solutions you need to make an impact**

## Benchmark

Benchmark your programs via events, online learning, research and executive networks

## Learn

Learn tools & techniques to execute your strategy and be inspired by peers

## Build

Build a network of peers whose experience can help you solve your challenges



# NAEM Connects EHS & Sustainability leaders

**120**

Corporate  
Members

**4,200**

Individual Members

**60**

Affiliate Members

Reaching a  
community of  
Practice

**25K+**



# Delivering Knowledge & Professional Wisdom

## Peer Forums



## Research Insights



## Targeted Networking



Actionable strategies to empower EHS&S leaders to make an impact

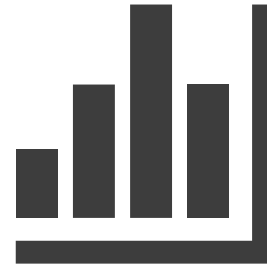
# NAEM'S Special Resources for COVID-19



Webinars



Publications



Quick Polls



Drop-In Calls



# Today's Presentation

*Thank You to Our Sponsor*

**cority™**

# Today's Speaker

Sean Baldry, CRSP

Product Marketing  
Manager

Cority



Webinar

# Winter is coming: Things your business needs to consider to manage risk in a post COVID-19 world

May 26, 2020

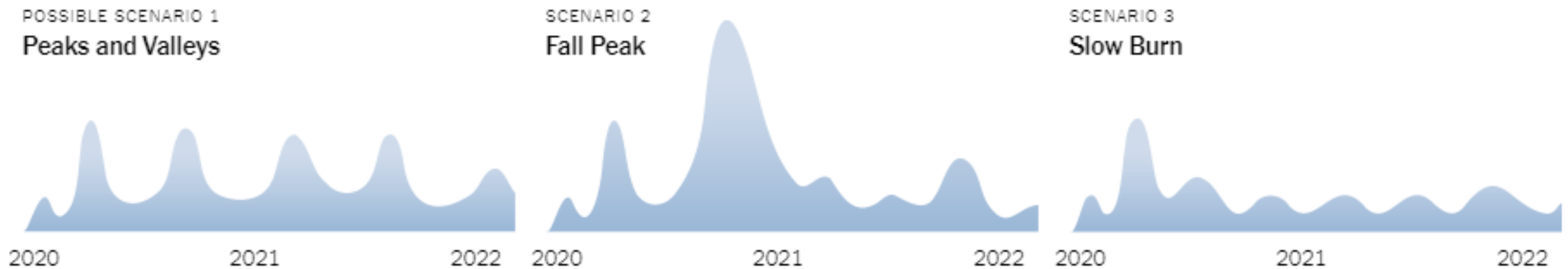
cority





# An Urgent & Sustained Threat

CIDRAP report described 3 possibilities



Source: Center for Infectious Disease Research and Policy. COVID-19: The CIDRAP Viewpoint, April 30, 2020

## 1. Preparing for the second wave

The combined threat of COVID-19 and influenza

## 2. Managing the risks beyond our borders

How businesses need to address travel risks post COVID-19





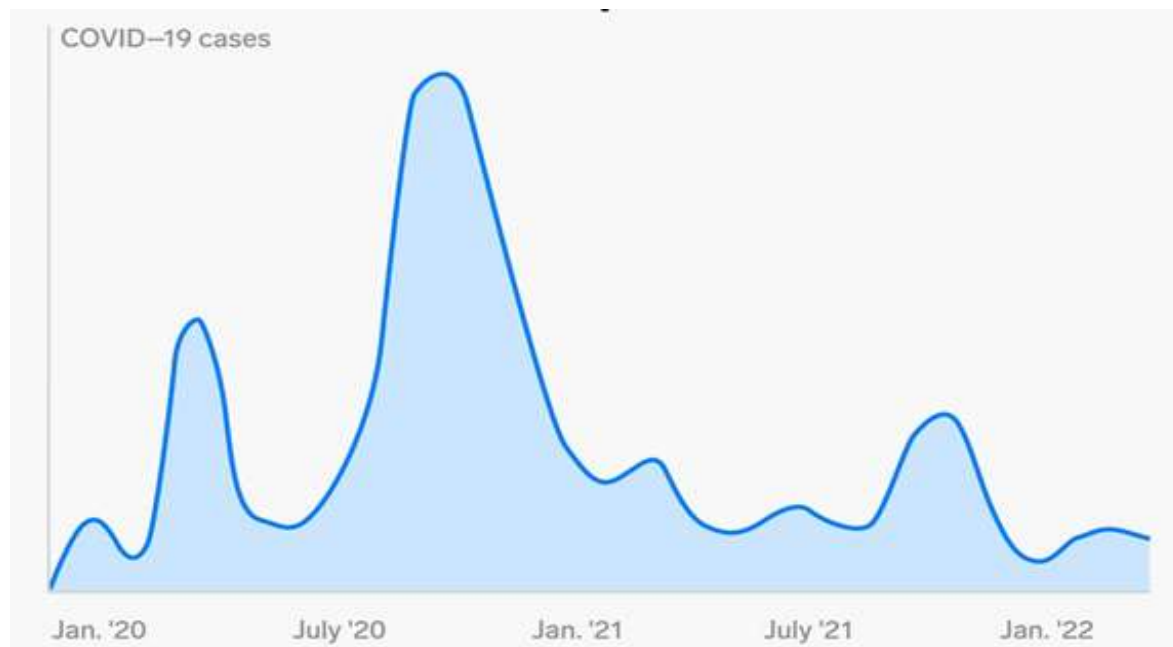
# Preparing for the second wave





## Possible COVID-19 Waves

Scenario 2: Fall Peak

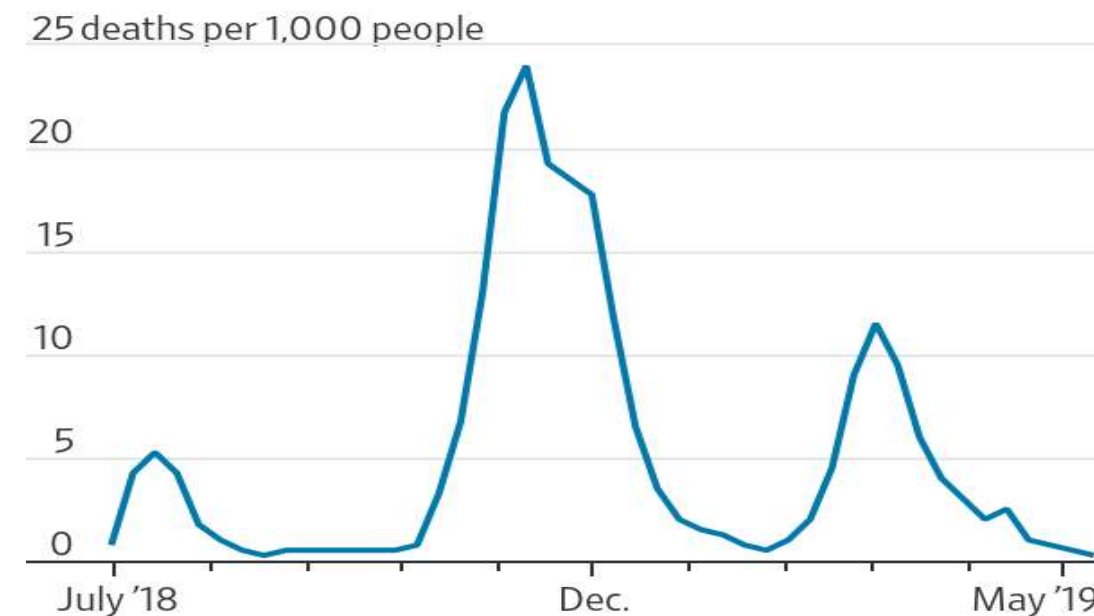


Source: Center for Infectious Disease Research and Policy  
Adapted by Business Insider

## The Second Wave

### Spanish Flu Second Wave

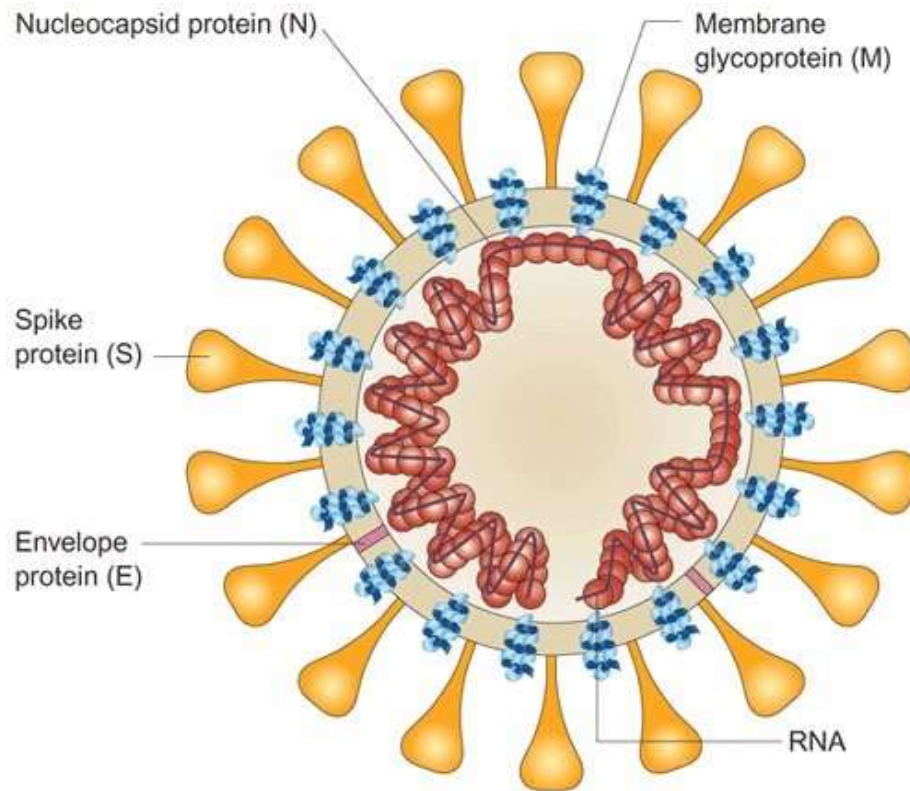
Weekly mortality rate during the 1918 influenza pandemic in England and Wales



Source: Edwin O. Jones, Jeffery K. Taubenberger, David M. Morens



# Anatomy of the second wave



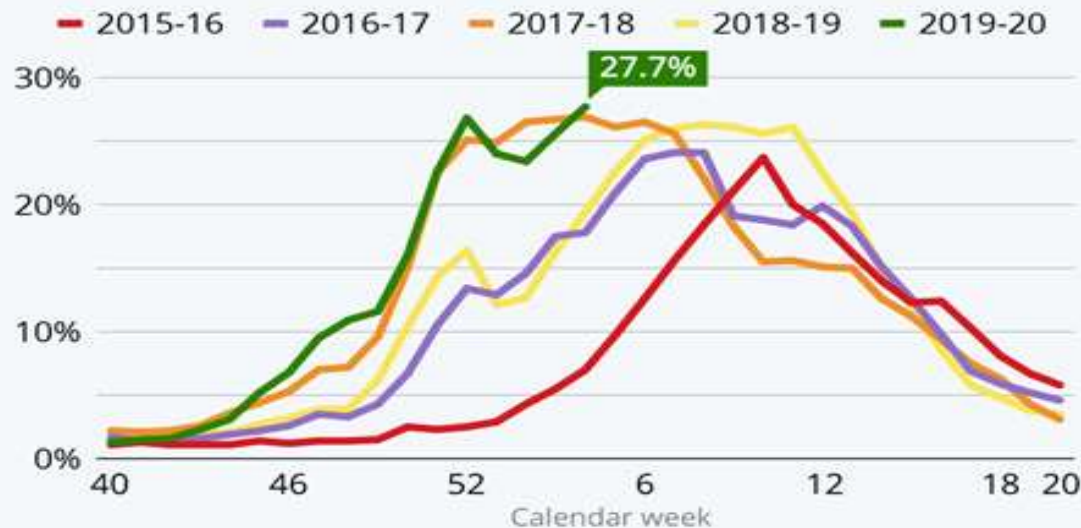
1. Reproductive rate & incubation
2. Seasonal impact on viral structure
3. Seasonal impact on behavior

Source: Viral Structure Cross-Section of SARS-CoV-2

Source: Paris, J. 2005.

## U.S. Experiences Worst Flu Season in Years

Share of influenza tests returned positive per week (seasons 16/17-19/20)



1. Elevated individual health risk
2. Increased strain on health care capacity
3. Further business disruption

Source: US Centers for Disease Control and Prevention (CDC), adapted by Statista



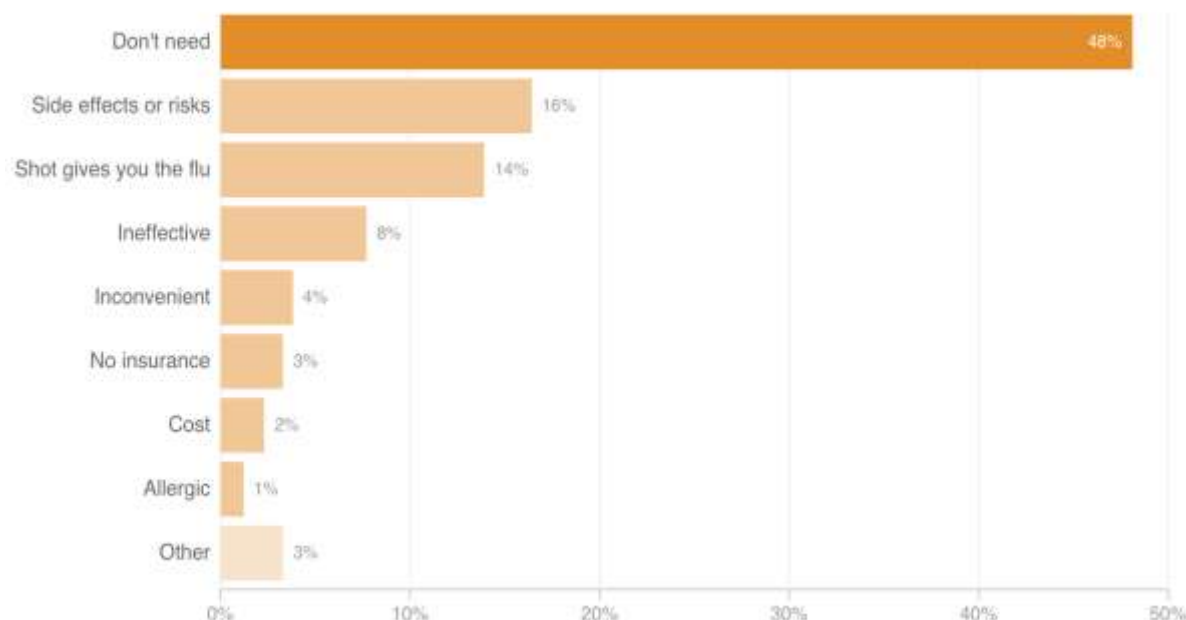


# Vaccination campaigns

Seasonal flu is estimated to cost employers \$21B in lost productivity<sup>1</sup>, and over \$10B in direct medical costs<sup>2</sup>

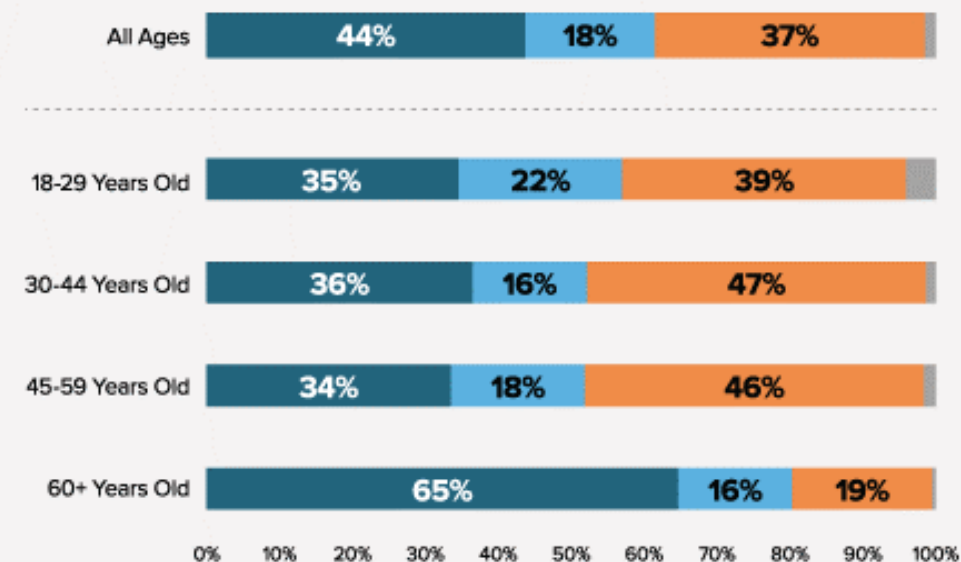
<sup>1</sup>Source: Challenger, Grey & Christmas, Inc. <sup>2</sup> US Centers for Disease Control & Prevention (CDC)

## Why people don't get flu shots



Source: The Truven Health Analytics-NPR Health Poll, October 2015, n=3,000

## Adults' Plans to Receive the Flu Vaccination for 2019-2020 Season



Source: National Opinion Research Center, University of Chicago Health Poll, November 2019, n=1,020



# Vaccination campaigns

## Key Challenges



Scheduling  
Appointments



Managing Vaccine  
Inventories



Optimizing Clinician  
Efficiency



Protecting Health  
Data Privacy

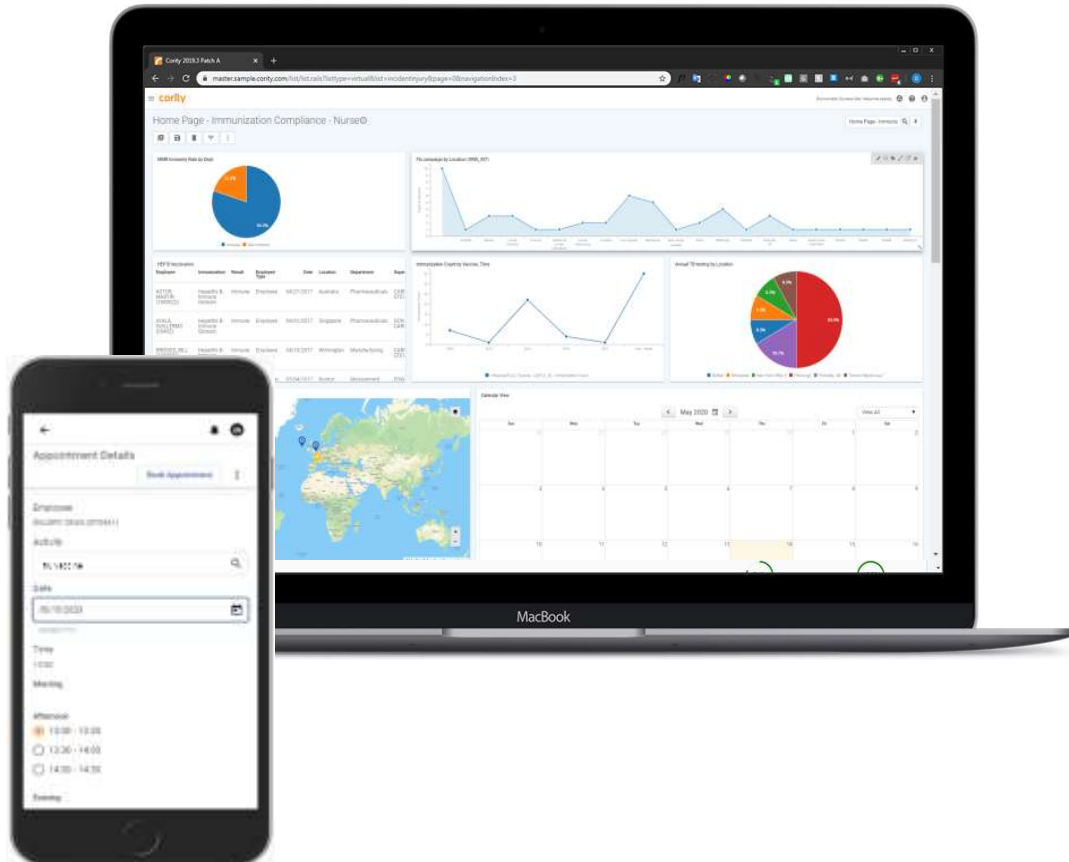


Managing  
Performance

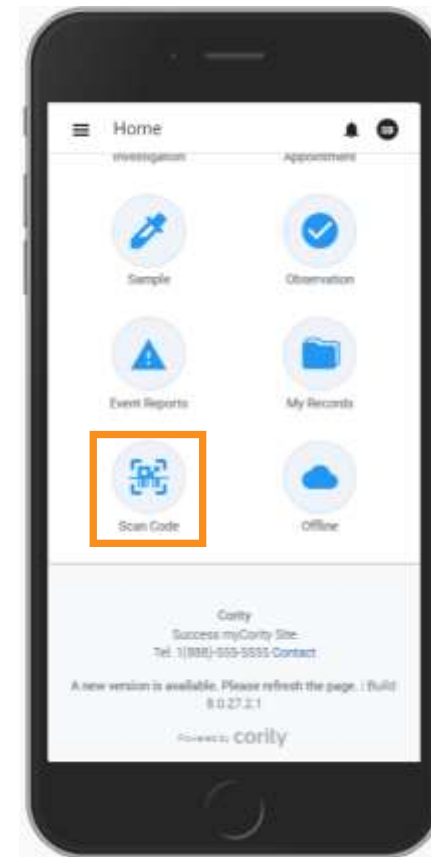


# How software optimizes vaccine campaigns

## Mobile-ready appointment scheduling



## Vaccine Inventory Management



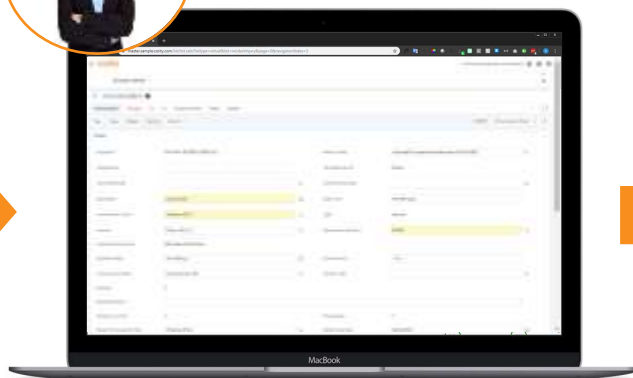


# How software optimizes vaccine campaigns

## Improving Clinician Efficiency via Data Management



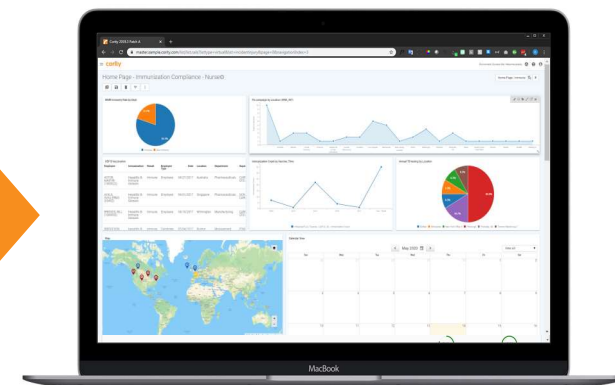
Employee completes mobile questionnaire



Nurse reviews the medical record + questionnaire



Vaccine administered



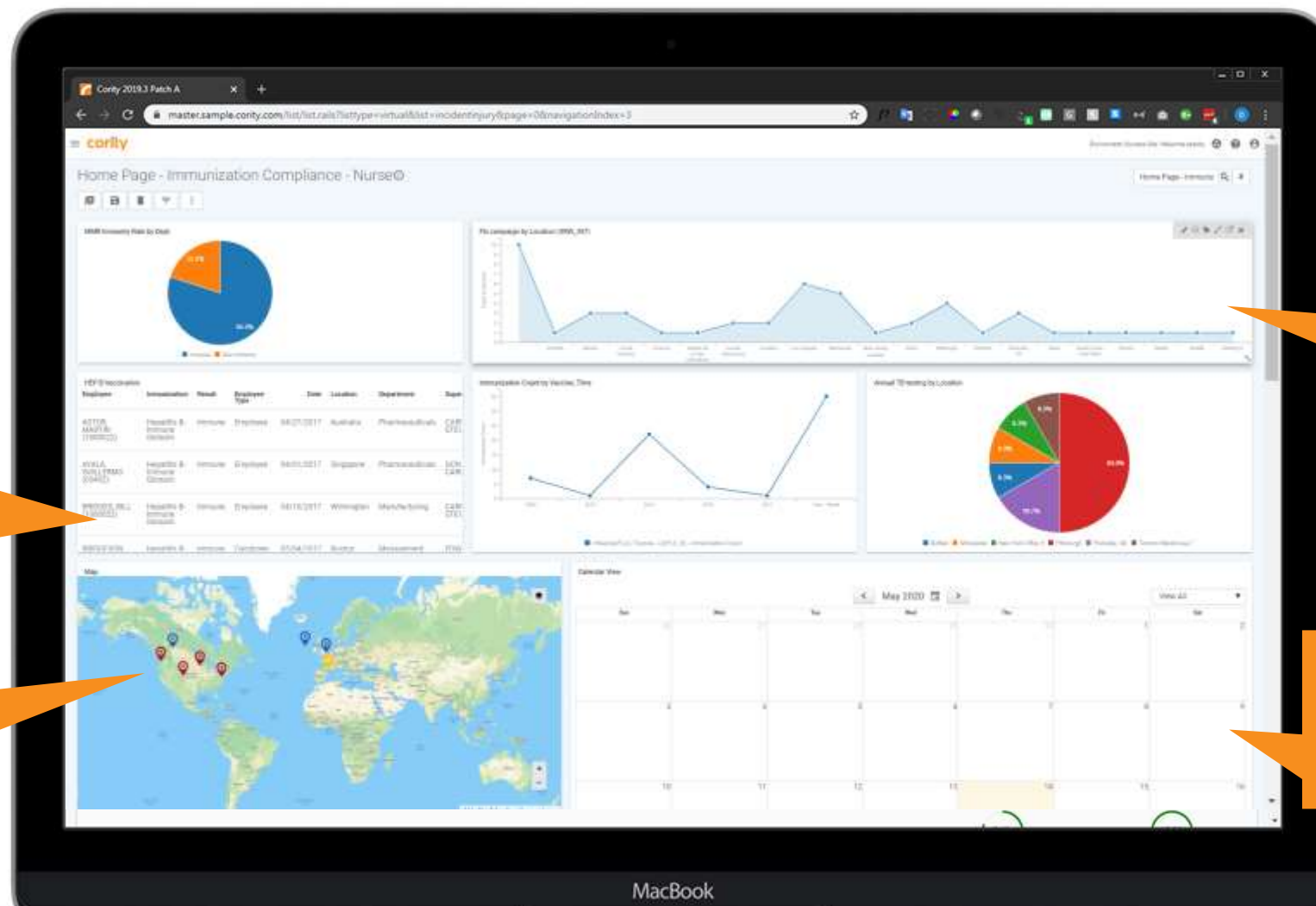
Nurse records dose & injection site in 1-2 clicks





# How software optimizes vaccine campaigns

**Data  
Visualization  
Drives  
Accountability**



Identify flagged responses in questionnaires for follow-up

Track # infections v vaccinations to determine impact

Track immunizations over time

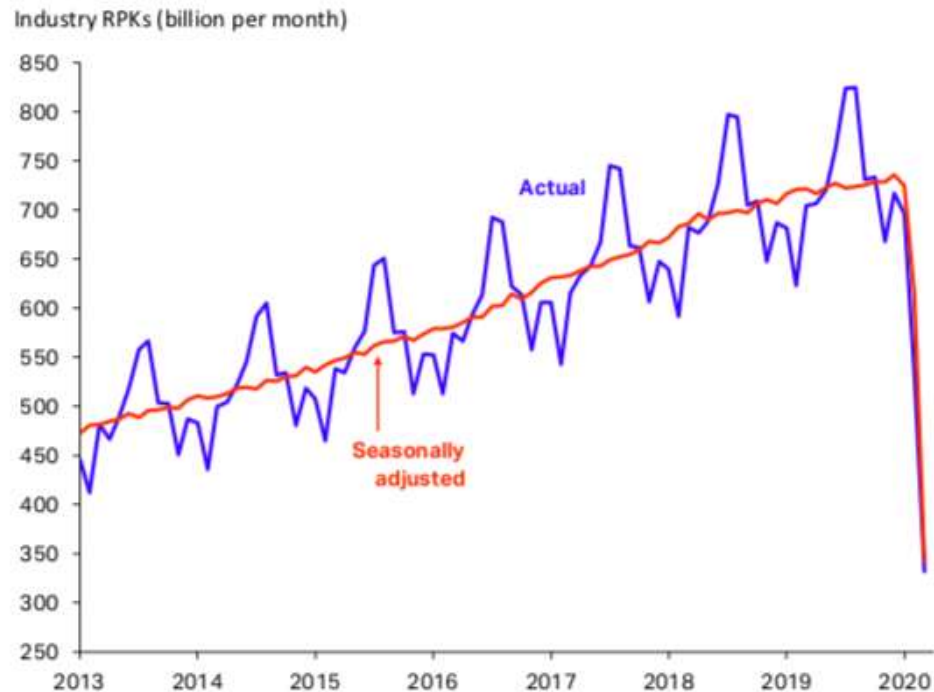
Manage clinician schedules and appointments

# Managing the risks beyond our borders



# How business travel is changing

## Airline passenger volumes



Source: IATA Economics, IATA Monthly Statistics

## Growth in Downloads of Video Conferencing Apps

(Week of March 15, 2020 vs Weekly Average for Q4 2019)



Source: TechCrunch



# How health will change travel







# What's in your travel clearance process?

## What do you need to consider



How to effectively assess risk of intended destination



How to ensure travelers have the proper vaccinations



How to control risks of returning workers

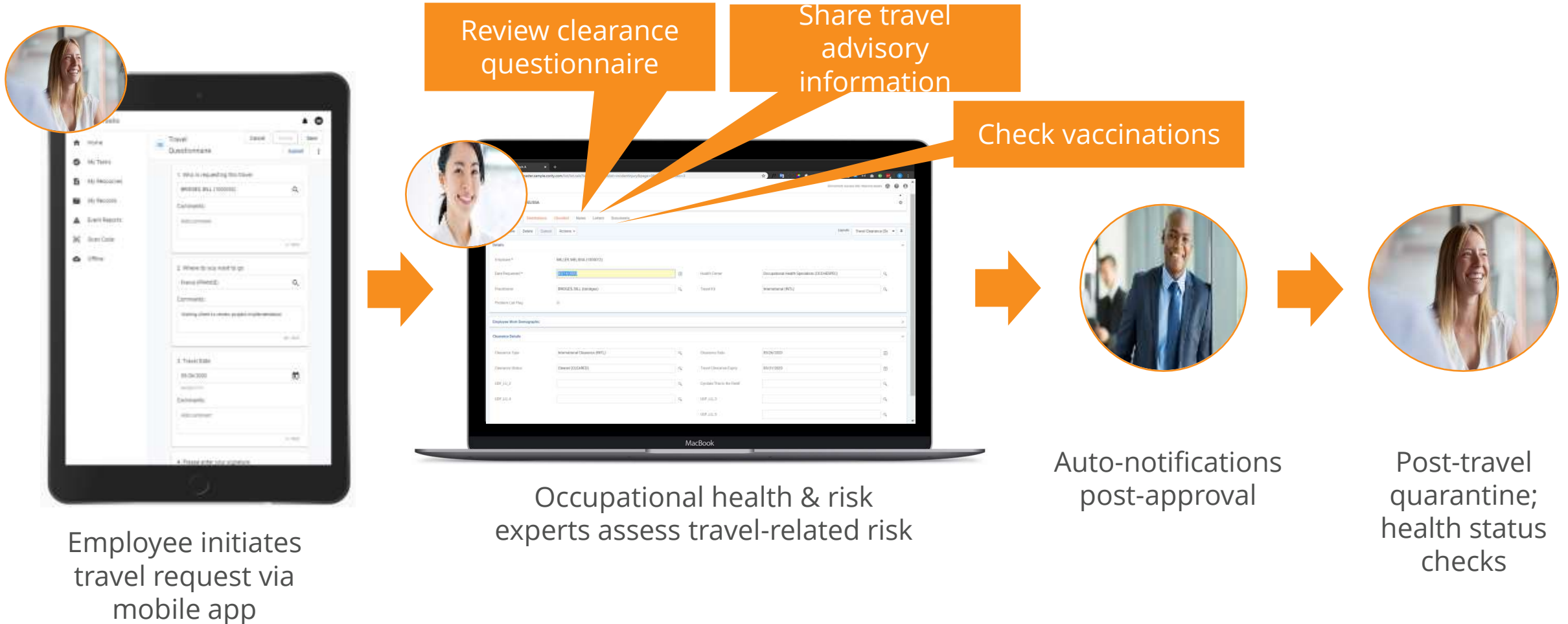


How to avoid heavy administrative burdens



# How software optimizes travel management

## Building a Travel Clearance Process





# How software optimizes travel management

## Translating your Travel Clearance Data into Meaningful Insights

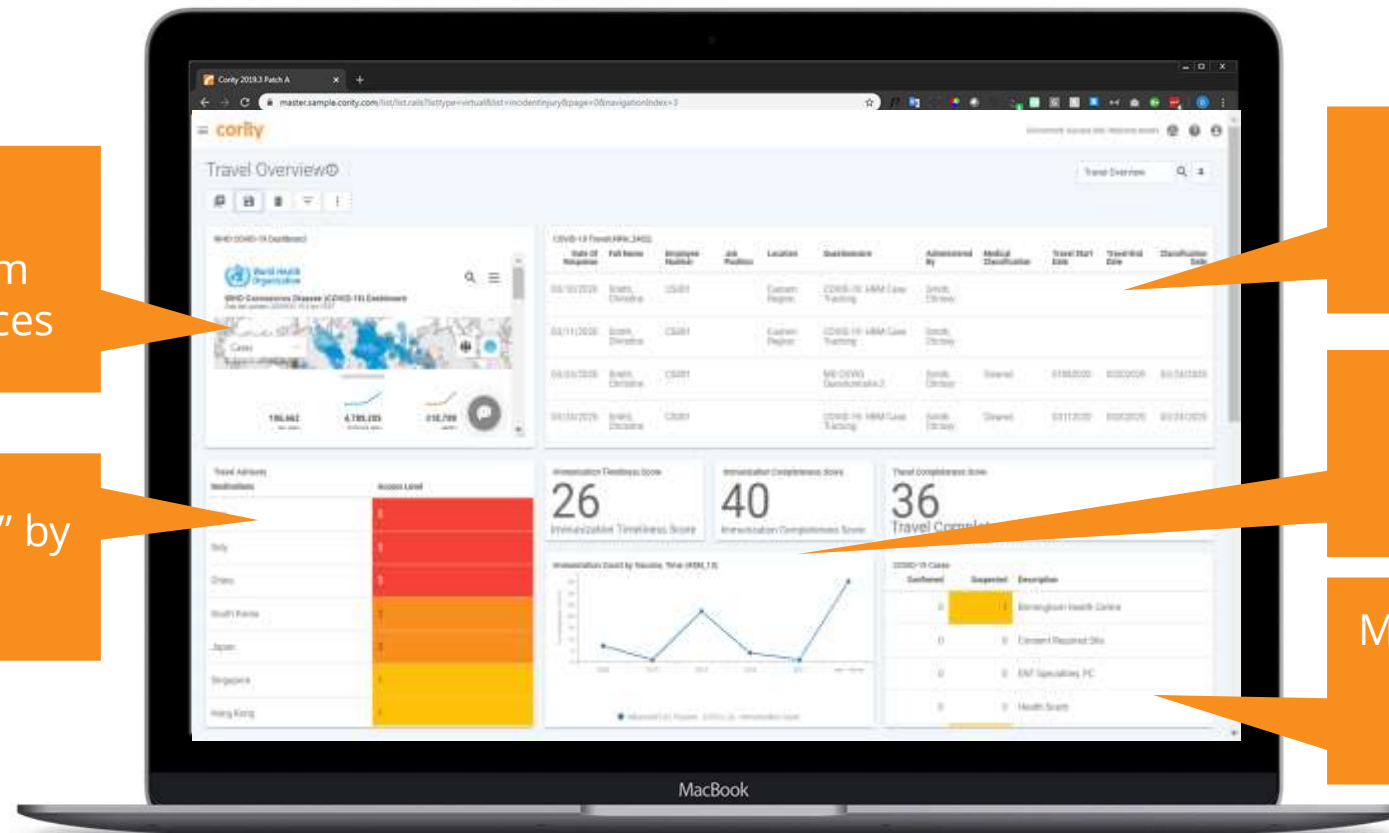
Access travel advisories from reputable sources

Track "hot spots" by level of risk

Track Travel Requests

Manage travel-related vaccinations

Monitor COVID-19 cases linked to travel



# Case Study





## Problem:

- UNHCR employees travel extensively
- Humanitarian work involves high degree of public interaction; risk of communicable disease
- Staff needs to be alerted to risk of travel to hostile areas
- Unable to effectively monitor employee health or approve travel.

## Solution: With software -

- Improved health monitoring and oversight
- 25% improvement in vaccination compliance
- 60% increase in medical evaluations



### United Nations High Commission for Refugees

Headquarters: Geneva,  
Switzerland  
Employees: 15,000

COVID-19 will remain an **urgent and sustained** threat

Second wave imminent  
**Vaccination campaigns limit risk**

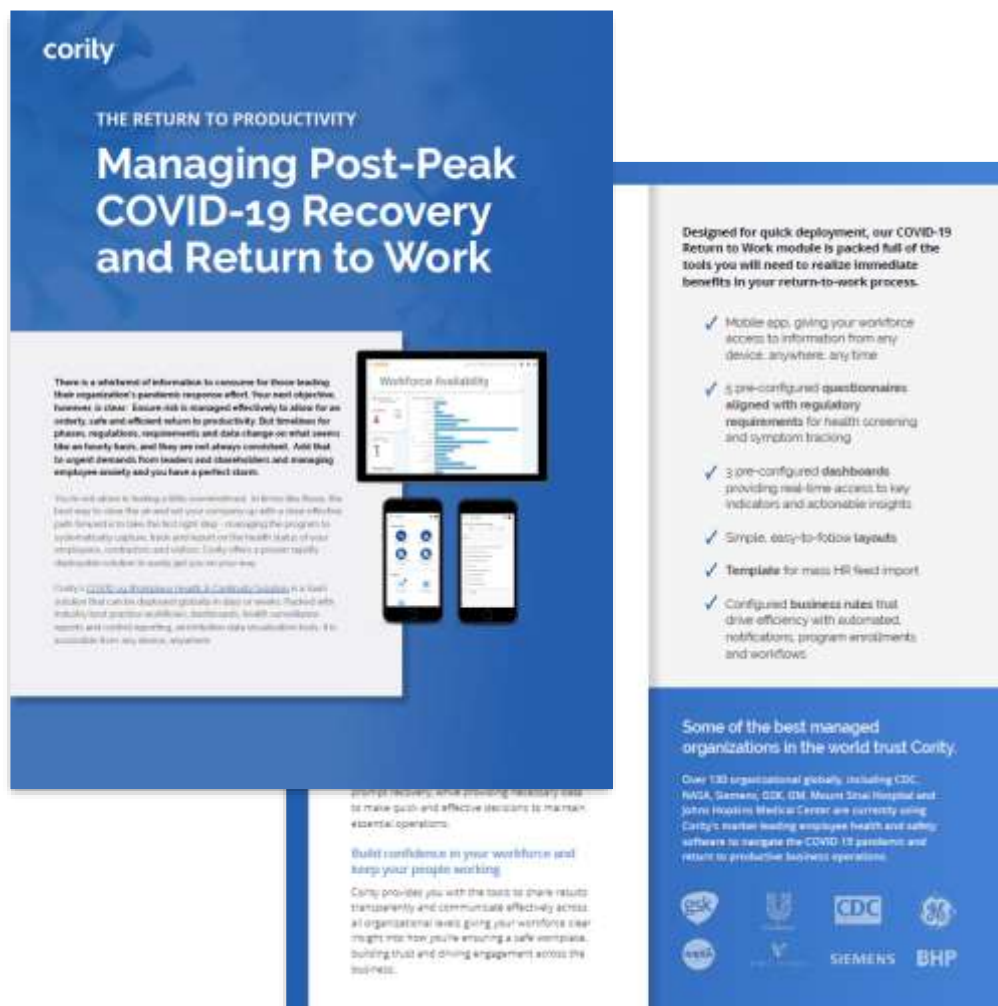
Future of business travel  
**Implement travel clearance process**

Software ensures efficient & reliable process





# COVID-19 Solutions



The brochure is titled "THE RETURN TO PRODUCTIVITY Managing Post-Peak COVID-19 Recovery and Return to Work". It features a blue header with the Cority logo. The main content area is white with blue accents. It includes a section titled "Workforce Availability" with a bar chart showing a decline in availability over time. Below this, there are two smartphone screens displaying the Cority app interface. The brochure lists several key features and benefits, including a mobile app, pre-configured questionnaires, dashboards, and a template for mass HR feed import. It also mentions that Cority is used by over 130 organizations globally, including NASA, Siemens, and BHP.

**THE RETURN TO PRODUCTIVITY**

## Managing Post-Peak COVID-19 Recovery and Return to Work

There is a wealth of information to ensure for those leading their organization's pandemic response effort, four next objectives. Foremost is clear. Ensure risk is managed effectively to allow for an orderly, safe and efficient return to productivity. But beyond that, plan, regulations, requirements and data change on what seems like an hourly basis, and they are not always consistent. Add that to urgent demands from leaders and stakeholders and managing employee safety and you have a perfect storm.

You're not alone in feeling a little overwhelmed. At Cority, we know the best way to close the gap and set your company up with a clear, effective path forward is to take the first right step - managing the program to systematically capture, track and report on the health status of your employees, contractors and visitors. Cority offers a powerful, rapidly deployable solution to enable just that for your company.

Cority's [COVID-19 Response Health & Safety Solution](https://discover.cority.com/l/covid-19) is a turn solution that can be deployed globally in days or weeks. Packed with industry best practice workflows, dashboards, built-in compliance reports and mobile reporting, an intuitive data visualization tool, it is accessible from any device, anywhere.

Designed for quick deployment, our COVID-19 Return to Work module is packed full of the tools you will need to realize immediate benefits in your return-to-work process.

- ✓ Mobile app, giving your workforce access to information from any device, anywhere, any time
- ✓ 5 pre-configured questionnaires aligned with regulatory requirements for health screening and symptom tracking
- ✓ 3 pre-configured dashboards providing real-time access to key indicators and actionable insights
- ✓ Simple, easy-to-follow layouts
- ✓ Template for mass HR feed import
- ✓ Configured business rules that drive efficiency with automated notifications, program enrollments and workflows

**Some of the best managed organizations in the world trust Cority.**

Over 130 organizations globally, including CDC, NASA, Siemens, CDC, (3M, Mount Sinai Hospital and Johns Hopkins Medical Center are currently using Cority's market leading employee health and safety software to manage the COVID-19 pandemic and return to productive business operations.

Build confidence in your workforce and keep your people working

Cority provides you with the tools to share results transparently and communicate effectively across all organizational levels giving your workforce clear insight into how you're ensuring a safe workplace, building trust and driving engagement across the business.

If you'd like to learn more about how Cority is supporting over 150 companies with their COVID-19 response, please visit us at:

<https://discover.cority.com/l/covid-19>



# We're pleased to answer your questions

If you have further questions about today's content, please reach out to us:

[sean.baldry@cority.com](mailto:sean.baldry@cority.com)







# Additional COVID-19 Resources



[The Ultimate Return to Work Kit](#)



# Additional COVID-19 Resources



[COVID-19 Employee Health Screening Tools](#)

# More COVID-19 Webinars

Free to Everyone

Range of Topics  
Managing COVID-19 within your company

Great Opportunity to Host  
Showcase your Experts & Expertise

***Sponsorship Information Contact: [Schana@naem.org](mailto:Schana@naem.org)***

# Relevant COVID-19 Publications

- Impacts of COVID-19 on the EHS Function
- Identifying and sourcing protective & safety materials
- Managing health, safety and mental health of a remote workforce
- Ensuring the health & safety of essential, on-site employees during COVID-19
- Effectively communicating to employees to facilitate behavior changes
- Continuing operations after an exposure incident
- Assessing and articulating the business risks from COVID-19 for the C-suite

***Download online at [www.naem.org/research](http://www.naem.org/research)***



# Upcoming Webinars on EHS&S Management

June 11



*Effectively  
Incorporating  
Sustainability Into  
Your Business*

July 1



*A First Look at the  
Impact of COVID-19  
on EHS Functions*

July 9



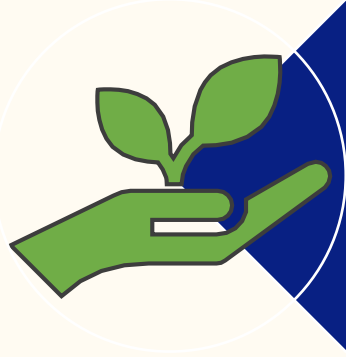
*A Climate Solution  
Where All Sides Win*

***FREE for NAEM members***

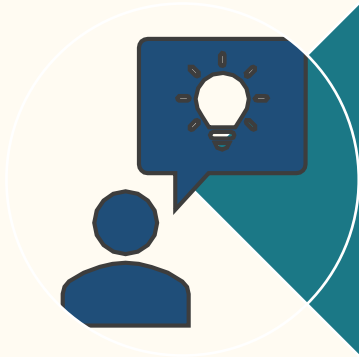
***Information & Registration on-line at [www.naem.org](http://www.naem.org)***



# Join Us for One of Our Conferences!



Sustainability Impact



EHS&S Management Forum

*Check our website for registration  
and additional information about our conferences!*

[www.naem.org](http://www.naem.org)

# New & Upcoming Reports from NAEM



- 2020 EHS & Sustainability Salaries
- 2020 Trends in Emerging Tech for EHS&S
- 2020 Staffing, Structure & Budgets

**All available @ [NAEM.org/research](https://naem.org/research)**



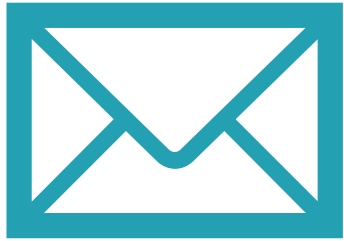
# Connect with NAEM!

- Online: [www.naem.org](http://www.naem.org)
- Via email: [caitlin@naem.org](mailto:caitlin@naem.org)
- Social media:
  - Twitter: [@NAEMorg](https://twitter.com/NAEMorg)
  - Facebook: [www.facebook.com/NAEM.org](https://www.facebook.com/NAEM.org)
  - LinkedIn: <https://www.linkedin.com/company/naem>





# Thank you for Attending!



**A recording will be  
available in 3-4 days.  
You will receive an  
email once it's posted  
to our site.**



**Have a safe & healthy day!**

