



Leveraging Digital Solutions to Ensure Operational Continuity During COVID-19

October 6, 2020



Welcome to NAEM

A professional community where you can get the solutions you need to make an impact

Benchmark

Benchmark your programs via events, online learning, research and executive networks

Learn

Learn tools & techniques to execute your strategy and be inspired by peers

Build

Build a network of peers whose experience can help you solve your challenges

Delivering Knowledge & Professional Wisdom

Peer Forums



Research Insights



Targeted Networking



Actionable strategies to empower
EHS&S leaders to make an impact

NAEM Connects EHS & Sustainability Leaders

120

Corporate Members

4,200

Individual Members

60

Affiliate Members

Reaching a
community of Practice

25K+



Today's Presentation

Thank You to Our Sponsor



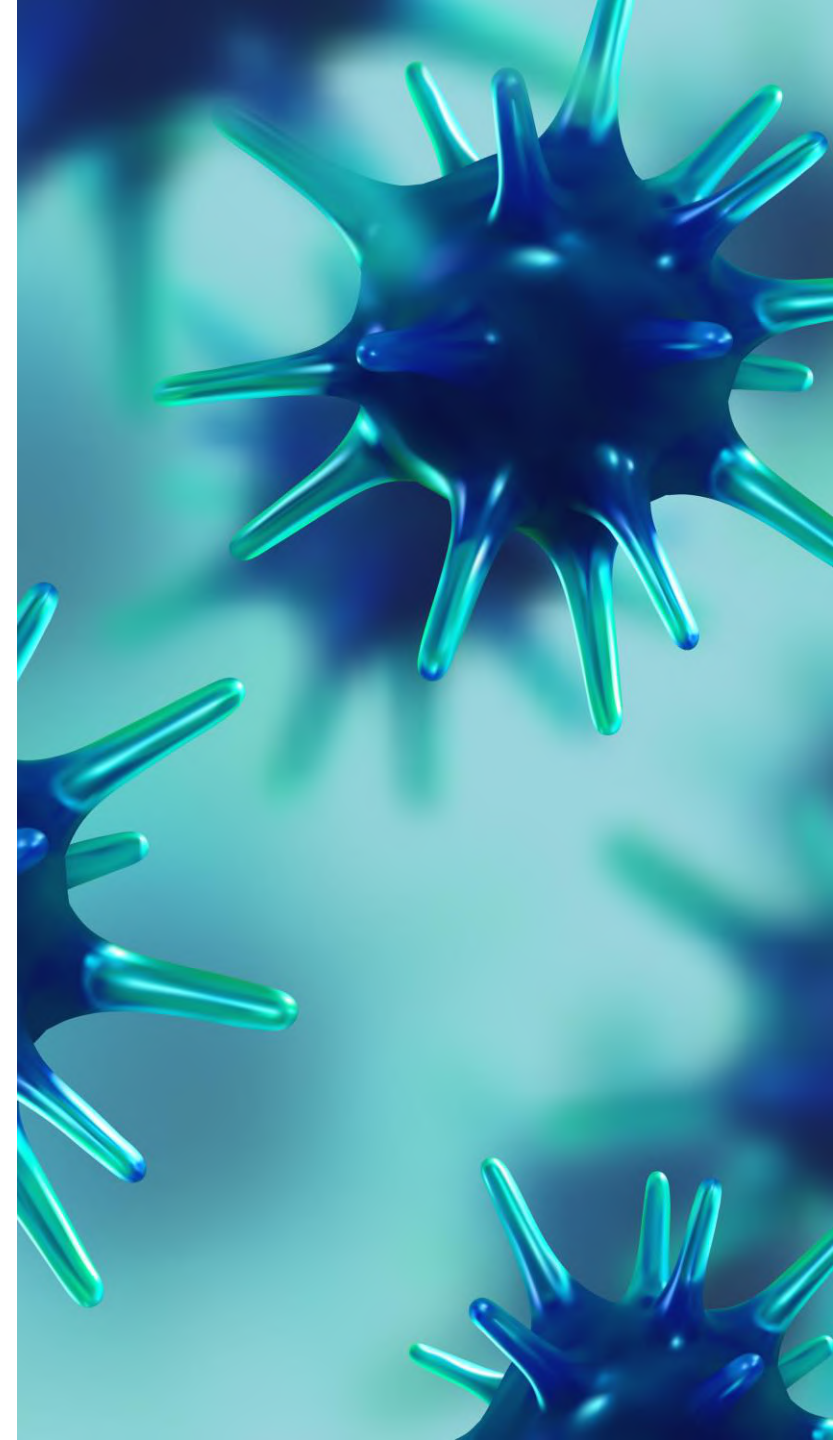
Today's Speaker



Drew Ross
Business Development Manager
Gensuite LLC.

AGENDA

- Introduction & Gensuite Overview
- Takeaways from the Covid-19 Executive Workgroup
- Covid-19 Response & Risk Management Tools in Gensuite
- Open Q&A & Discussion





Comprehensive Solutions Suite

- Built on Best Practice Workflows
- Latest Tech & Innovations
- Scalable from one site to enterprise



Cloud-Based, Single Version Software

- Readily Configured & Launched typically in <3 months
- Powerful Extensions, IT Integrations & API library
- Continuous evolution, never obsolete



Streamlined Collaboration Platform

- Supporting 30+ Languages
- 1,500,000+ users in 120 countries
- No user licenses, rapid deployment

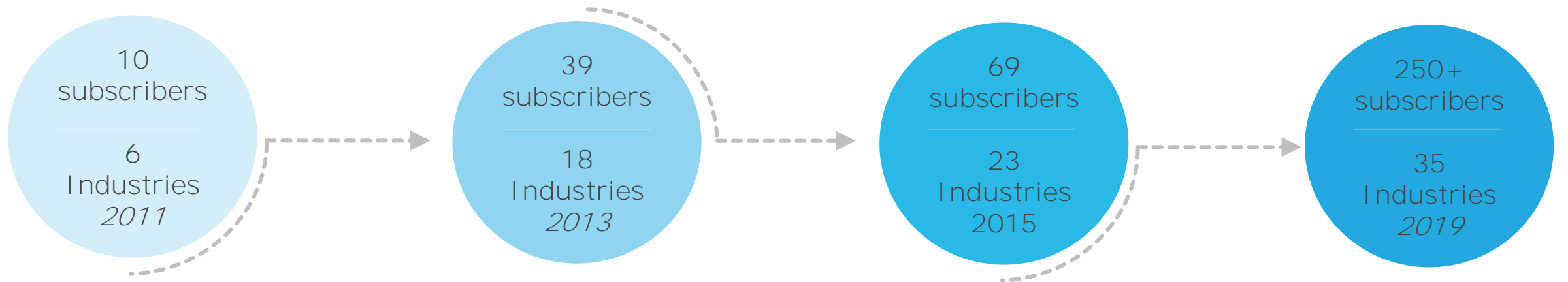


Engaging & Empowering Stakeholders

- Real-Time Data Analytics & Dashboards
- Accessible across Desktop to Mobile
- Global support team in 8 countries

THE GENSUITE STORY

FAST GROWING / HIGHLY ENGAGED GROUP OF SUBSCRIBERS



Built on a heritage of proven success in a large multinational corporation: 1997 – 2010

50% annual growth rate in subscribers since launch!

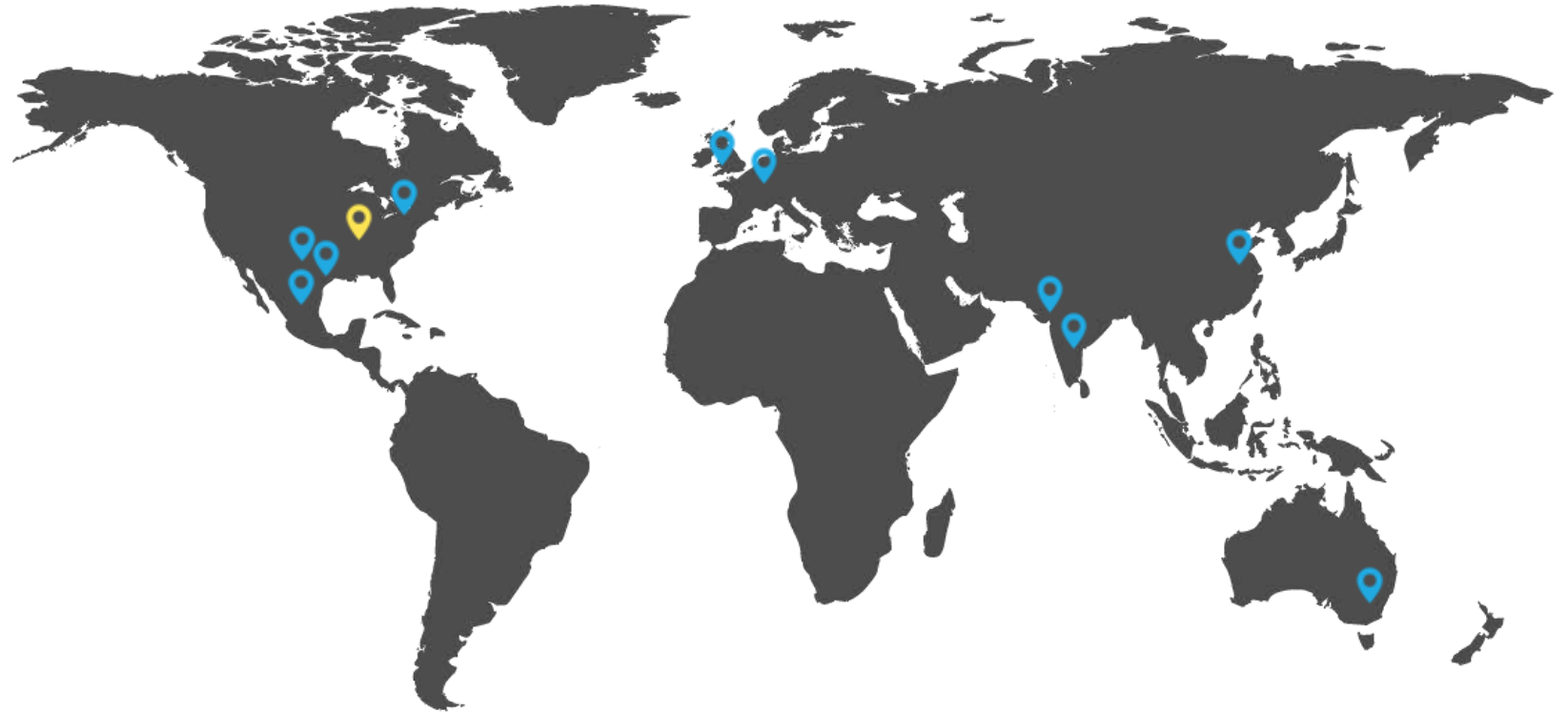
EHS & SUSTAINABILITY | RESPONSIBLE SOURCING | QUALITY | PRODUCT STEWARDSHIP
SECURITY | REGULATED ASSET & EQUIPMENT MANAGEMENT

- 👍 25,000+ Sites
- 👍 ~1,500,000 Global Users
- 👍 In 120+ Countries

- ♥ #1 in Customer Service (NAEM MIS Survey, Capterra)
- ♥ 92% Customer Retention Rate (since 2015)
- ♥ 100% On Time Launch, Mostly <3 months

GLOBALLY Integrated team

- 400+ global Gensuite team members in 8 countries
- Global deployment capabilities with integrated service partner options
- Rapid response through dedicated support team with deep domain knowledge
- Product operations, development & innovation, round the clock
- Supporting subscribers/users in 150+ countries



Gensuite Global HQ



Gensuite Office Location

GENSUITE MOBILE Takes You There



Take your Management System everywhere!

120,000+ users use Gensuite Mobile today to...

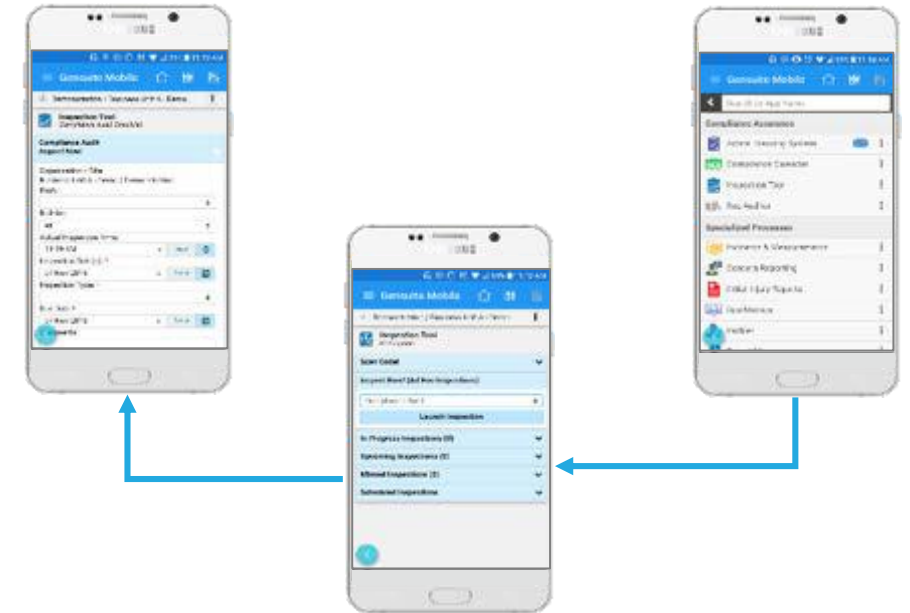
- Record and initiate action
- Accelerate follow-up
- Enhance business productivity

Using...

- Mobile-centric forms
- Attach photos/videos/voice recordings
- Offline forms
- Hands-free App voice assistant
- QR Code scanner
- ✓ Gensuite Mobile App included standard with every subscription - no additional setup/licensing cost
- ✓ Consistent user experience - every module & configuration accessible responsively on Phone, Tablet, PC



Gensuite EZ Scan



Download Gensuite Mobile



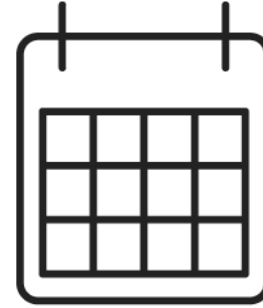
COVID-19 Crisis: Gensuite Response



Safe & Healthy Global
Team; No Service
Disruptions



Launched COVID-19
LinkedIn Executive
Collaboration Forum



Established a COVID-19
Executive Collaboration
Workgroup



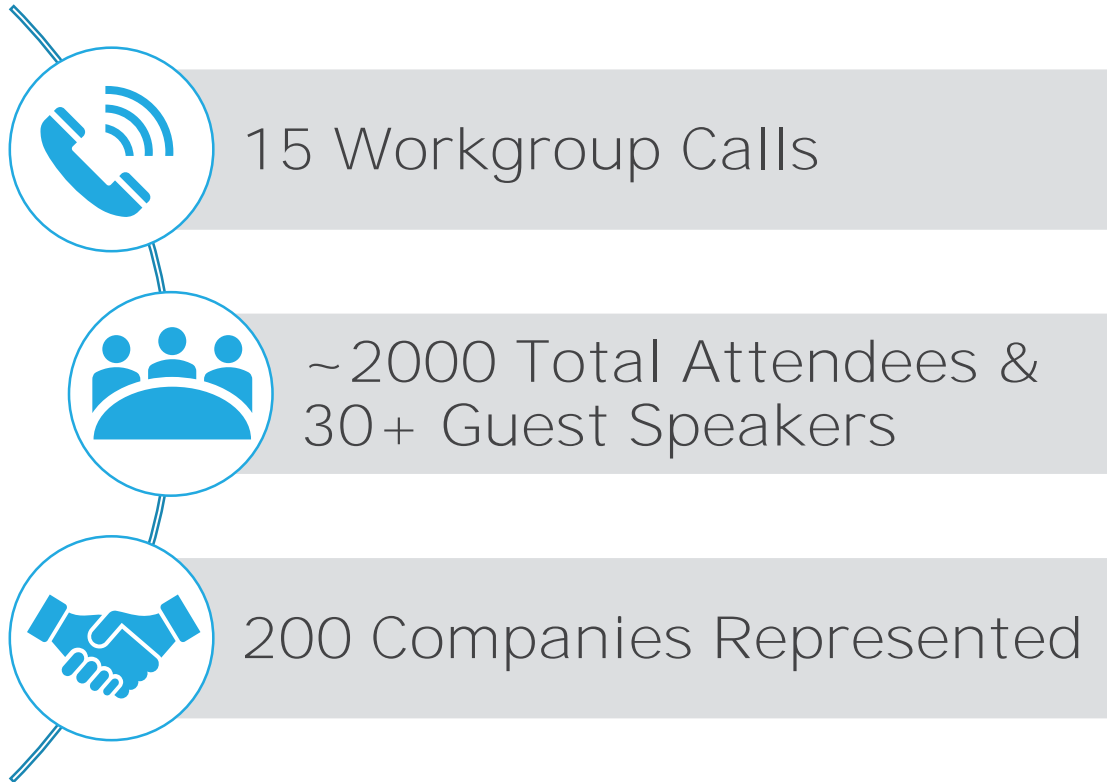
COVID-19 Resources
Available on our Website

Refocused product & services roadmap based
on COVID-19/Pandemic Response needs



COVID-19 Workgroup

COVID-19 Workgroup Stats & Themes



Key Discussion Themes

- Latest Regulatory Updates & Guidelines
- Return to the Workplace Strategies
- **Modularized Working “Pods”**
- Face Covering Policies & Good Practices
- Employee Travel Protocols
- Contractor & Field Worker Exposure Risk Mgmt
- Employee Mental Health & Wellness
- Thermal Scanning Technology

COVID-19 Workgroup Collaboration & Recognition

NAEM & Gensuite Face Covering Survey



- 144 Total Responses (Gensuite & NAEM Campaigns)
- 9 Face Covering Policies Shared

7. Select the types of face coverings that are allowed:

N95 Respirators	55%
KN95 Respirators	49%
Surgical Masks	90%
Cloth Masks / Face Coverings	85%
Neck Gaiters	47%
Face Shields	32%

Award Winner: Pandemic Event Response Module

Pandemic Contact Log

Source of Contact: Primary | Person ID: Jon Hibbard (100000194) | Person Type: | Occupation: | Circumstances: |

Add Contact With Above Person (contact tracing)
Note: Jon Hibbard (100000194) is referenced as a secondary contact in Event ID(s): 832, 173, 175, 179

Response by Circumstance							Person Status						
Circumstances	Not Specified	Employee(s)	3rd Party Contractor(s)	Contingent / Temporary(s)	Other(s)	Grand Total	Status of Person	Not Specified	Employee(s)	3rd Party Contractor(s)	Contingent / Temporary(s)	Other(s)	Grand Total
Close Personal Contact	0	34	12	9	2	57	Confirmed Negative	0	13	1	2	0	16
Live in Area of Community Spread	0	12	8	14	1	35	Confirmed Positive	0	39	9	8	4	60
Not Specified	0	47	15	24	13	99	Declined	0	0	0	0	1	1
Symptoms	0	28	4	3	0	35	Not Specified	0	32	24	28	10	94
Travel to High Risk Area	0	6	8	11	1	26	Pending	0	7	2	6	0	15
Grand Total	0	127	47	61	17	252	Presumed (Asympt..	0	17	9	8	1	35

As of 18-Sep-2020: 95+ businesses
~13,600+ primary events logged
~1,200 secondary contacts

2020 International Business Awards: Most Valuable Product
"A useful package that every organization, and possibly governments, would like to have to continue their productivity and make informed decisions on the impact on operations & at risk sites."





Gensuite COVID-19 Pandemic Response Solutions

Gensuite COVID-19 Tools & Resources

Pandemic Response Solutions

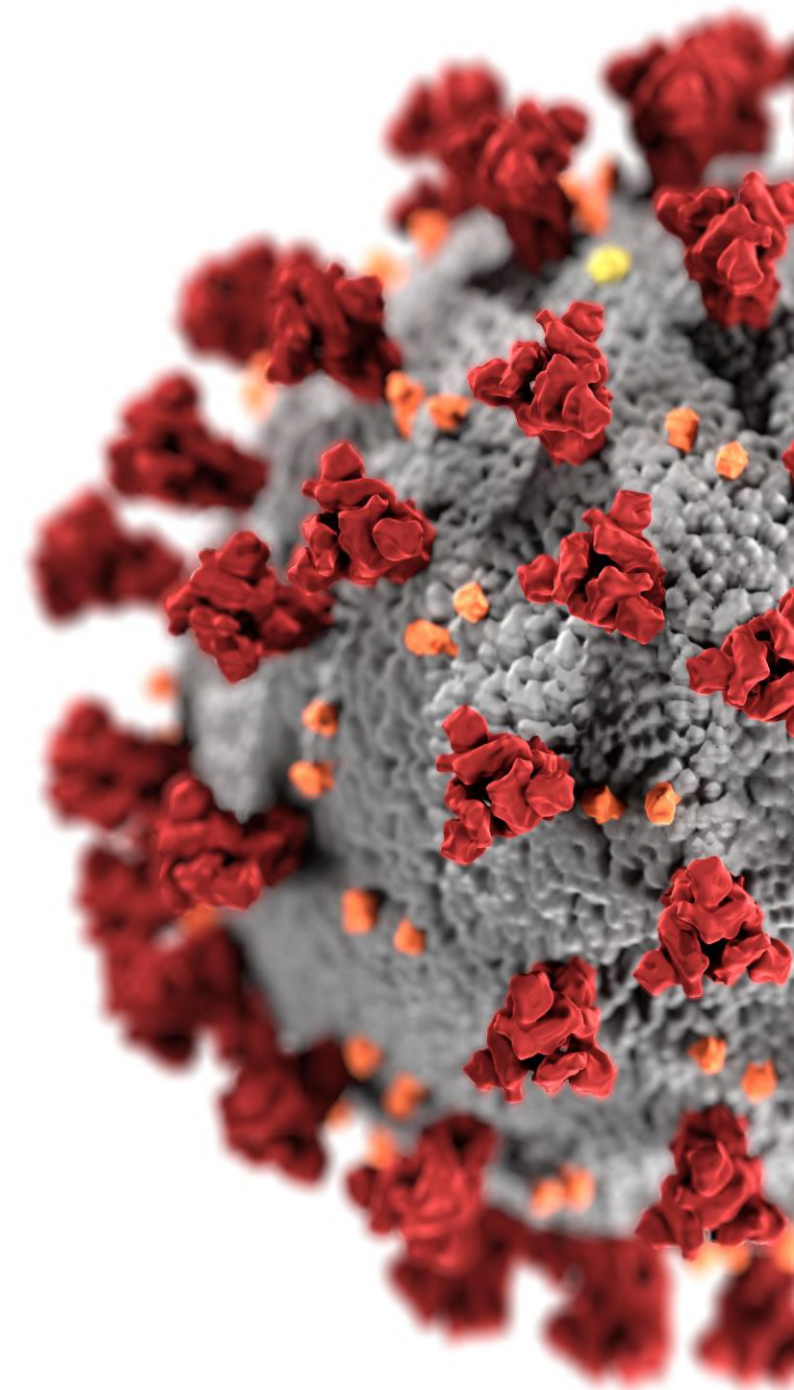
- Exposure Tracking & Contact Tracing
- Heat Mapping & Analytics
- Covid-19 Regulatory Updates
- Pandemic-Critical PPE Management

Preparing For Return to Work

- Employee/Visitor Screening Questionnaires
- Covid-19 Workplace Inspections
- Business Continuity Planning & Recurring Task Management
- Employee Concern Reporting

Supporting New Working Conditions

- One-Click Collaboration with Real-time Video/Audio/Chat streaming (U Connect)
- Home Office Ergonomic Evaluations
- Covid-19 Training Courses



Gensuite Covid-19 / Pandemic Event Response Module: Summary

Standard Features

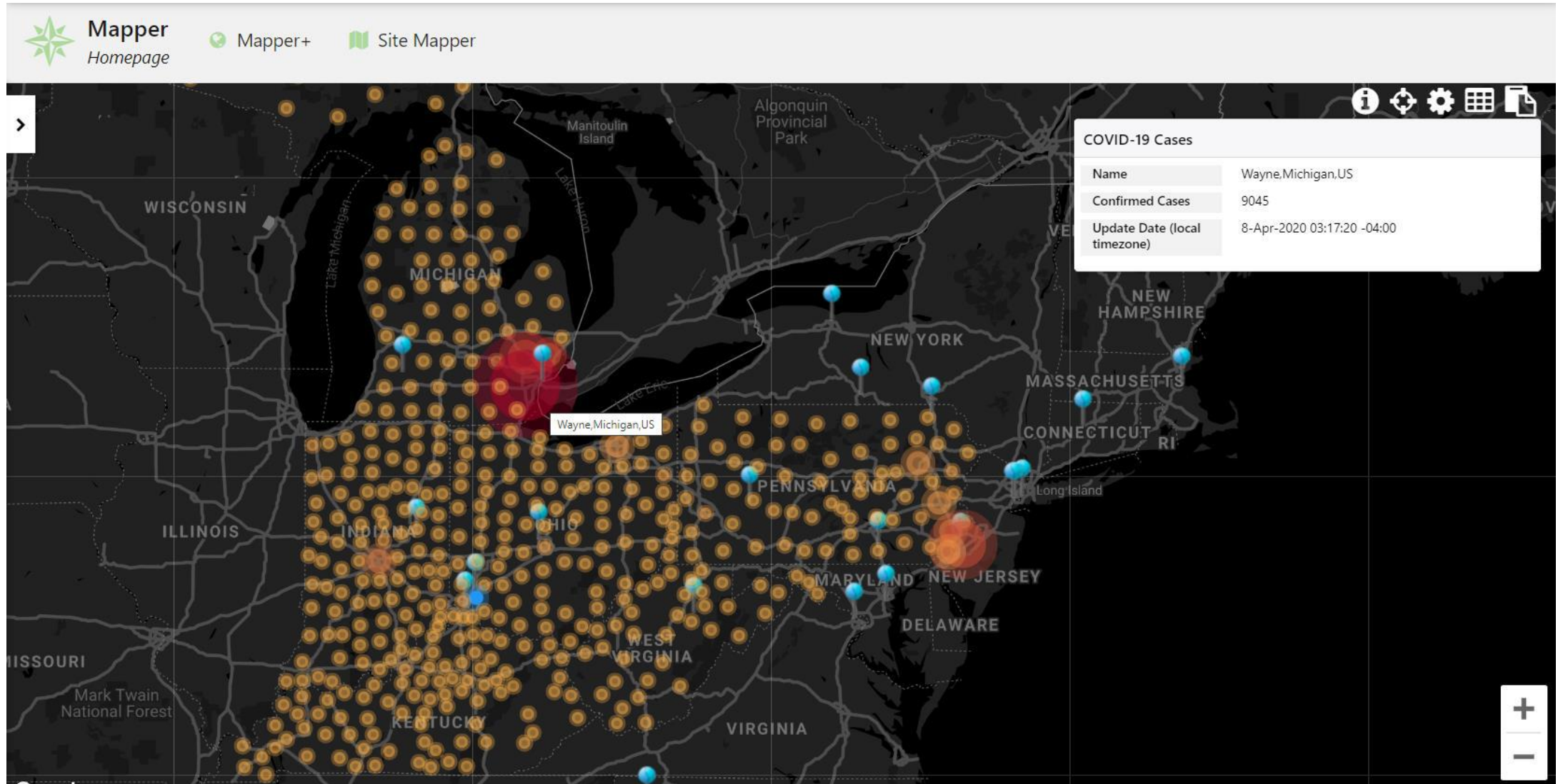
- Track primary and contacted persons in each event record, including symptoms, status and return to work date
- Access restricted to users with special Pandemic Log permissions only for data security & protection
- Email notifications limited to key stakeholders & individuals with the appropriate distribution list designation - standard incident/event d-lists will not be applied
- Filter options built into Pandemic Data Mining page for searching contact log for specific records based on date ranges, Persons, Status, etc.
- Integrated Analytics | Tableau® reporting via Gensuite Analytics

65+ companies
5,000+ events logged
to-date

- ✓ Single Sign On (SSO) Enabled
- ✓ Company Directory for user/employee lookup
- ✓ Requires Level 1 access permissions with Pandemic Log Lead Special Right to Gensuite Incidents & Measurements
- ✓ Designated site leads granted Pandemic Log Special Right profiles; and included in new/changed Site lead
- ✓ Demonstration Site available for sandbox activity

Mapper COVID-19 Heat Map Overlay

Overlay a heat map of confirmed cases (based on Johns Hopkins University data) onto Gensuite Mapper to see hot spots near subscriber facilities



Reg Tracker – COVID-19 Updates



Reg Tracker: Regulatory Updates through 07-Apr-2020



To Petzinger, Amanda (Gensuite LLC)

Quick View: [COVID-19](#)

U.S.

New! COVID-19 Implications for EPA's Enforcement and Compliance Assurance Program

Published Date:	Effective Date:	Country(State):	Report Group:
26-Mar-2020		U.S.	COVID-19

EPA will exercise the enforcement discretion specified in its memo for noncompliance covered by this temporary policy and resulting from the COVID-19 pandemic, if regulated entities take the steps applicable to their situations, as set forth in the policy. In general, the EPA does not expect to seek penalties for violations of routine compliance monitoring, integrity testing, sampling, laboratory analysis, training, and reporting or certification obligations in situations where the EPA agrees that COVID-19 was the cause of the noncompliance and the entity provides supporting documentation to the EPA upon request. Authorized states or tribes may take a different approach under their own authorities. EPA will post a notification at least seven days before terminating this temporary policy.

New! Enforcement Notice on Expiring CDLs

Published Date:	Effective Date:	Country(State):	Report Group:
24-Mar-2020		U.S.	COVID-19

This Notice of Enforcement Policy provides relief from specified federal motor carrier safety regulations for CLP holders, CDL holders, and non-CDL drivers and motor carriers using those drivers. This Notice of Enforcement Policy applies to all CLP holders, CDL holders, and non-CDL drivers whose license was issued for less than the maximum period and was valid on February 29, 2020 and expired on or after March 1, 2020. This Notice expires June 30, 2020. This notice was last updated March 25, 2020.

New! FMCSA COVID-19 Drug & Alcohol Testing Guidance

Published Date:	Effective Date:	Country(State):	Report Group:
25-Mar-2020		U.S.	COVID-19

FMCSA has issued guidance for FMCSA-regulated employers unable to conduct the following activities due to disruptions caused by the COVID-19 national emergency:

- Random drug and alcohol testing;
- Pre-Employment Testing
- Post-accident testing;
- Reasonable suspicion testing;
- Return-to-duty (RTD) testing; and
- Follow-up testing.

Additional guidance is provided for FMCSA-regulated employees. This guidance document does not have the force and effect of law and is not meant to bind the public in any way. This guidance is intended only to provide clarity regarding existing requirements under the law. This guidance was last updated March 25, 2020.

Single source repository for COVID-19 updates and other regulatory changes as published.

Content partners:



Free Access: Reg Tracker on Gensuite Guest Instance

STC: U.S. Federal & 13 U.S. States (CA, FL, IL, IN, OH, MA, MI, NY, NJ, PA, TX, VA and WA)

Now Including ENHESA International Jurisdictions (60+) ...

Australia, Canada, China, European Union, France, Germany, India, Iraq, Ireland, Italy, Japan, Mexico, Pakistan, Saudi Arabia, South Korea, Spain, Switzerland, Taiwan, Thailand, Turkey, United Arab Emirates, United Kingdom, Vietnam ...

Weekly Regulatory Updates and Email Digests triggered every Tuesday

Tools to Help Transition Back to the Workplace

- Pandemic Temperature Screening
 - Quick-log temperature screening form and escalate follow-up steps from elevated screenings
- Concern Reporting
 - Boost employee engagement by allowing employees to report potential exposures
- Survey Engine
 - Identify exposed or potentially infectious individuals through self-monitoring health screenings w/conditional feedback

Temperature Screening Quick Log (MedCare)

Employee Temperature

Employee Name/SSO *

Cecily J Sexton (1000... x

Temperature *

100.8

Temperature Unit

Fahrenheit

Date/time *

02-Jun-2 x Today

Eastern Standard Time

Comments *

Temperature taken using a Veridian touch-free infrared

Log Temperature

Close

Survey Engine
Survey - Self-Monitoring Health Screening

As a preventative measure to protect the safety and well-being of our employees and their families, the Company has instituted the following questionnaire that must be completed prior to entry to a facility.

If you answer "Yes" to the question below, you are not cleared to come to work. Please contact your manager via phone and they will coordinate with HR and the Pandemic Response Team on next steps.

If you answer "No" to the question below, you are cleared to come to work today. Please present a copy of your assessment confirmation to your manager upon arrival.

Amanda Petzinger, 02-Jun-2020 [Notice to respondents](#)

THIS IS NOT AN ANONYMOUS SURVEY. YOUR NAME AND UserID WILL BE RECORDED WITH YOUR RESPONSE.
Amanda Petzinger, amanda.petzinger@gensuite.com

1. Do you have any of the following health symptoms: coughing, sneezing, shortness of breath, and/or temperature at or above 100.4 degrees Fahrenheit?

☒ Yes
☐ No

Response Required

NOT CLEARED - please do not report to work; contact your manager via phone for next steps

Cancel Submit

PPE Management & Tracking

- Ability to define pandemic & operations critical PPE
- Optimizing the supply of PPE
- Standardize the process for defining:
 - Critical PPE Inventory – type & quantity at each site
 - Project PPE Usage – “**Burn Rate**” over period of time
 - PPE Needs & Gaps – per site or business-wide

PPE Manager
Homepage

Keyword Search

PPE Inventory Summary [Show All Business Priority PPE Categories](#)

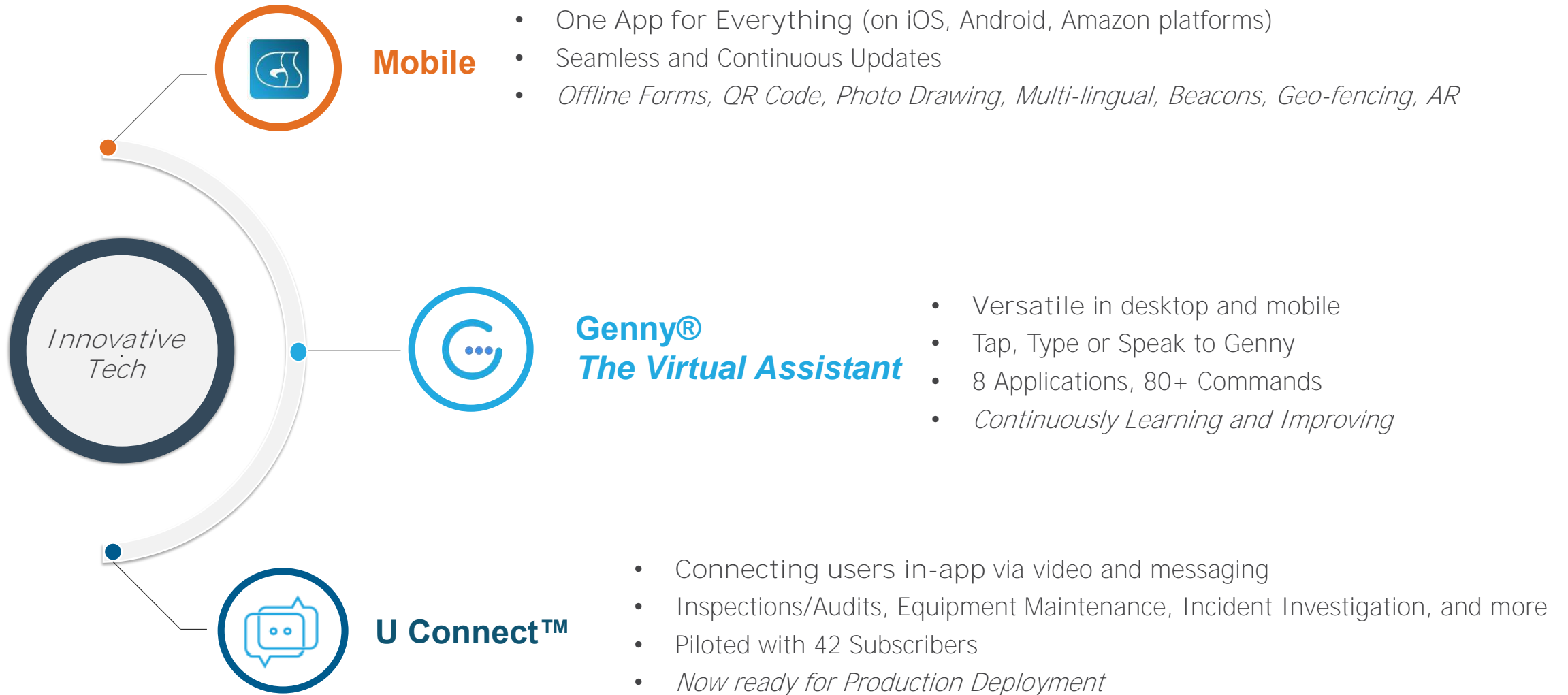
Search 25 rows

PPE Category	#PPE Items	Current Inventory	Inventory Date(s)	Need (#/period)	# Periods Covered	SRA (JSA) References
Cloth Face Coverings	3	2512	17-Jun-2020	2000 per Month	1.3 Month(s)	0
Disinfectants	5	3025	17-Jun-2020	100 per Week	30.3 Week(s)	0
Gloves	6	2700	17-Jun-2020	1000 per Year	2.7 Year(s)	0
N95 Masks	2	125	17-Jun-2020	250 per Month	0.5 Month(s)	0
Surgical Masks	1	350	27-Apr-2020	100 per Week	3.5 Week(s)	0
Thermometers	2	55	17-Jun-2020	50 per Week	1.1 Week(s)	0

1



Advanced Platform Technologies – Ready for Use!



[Back...](#)

Integrated Collaboration & Remote Engagement

*U Connect*TM



- Connecting users in the field with remote experts, via video and messaging
- Requires no third party or integration, just **"U Connect"** from inside any application page
- Perfect for: *Inspections/Audits, Equipment Maintenance, Lockout Tagout, Incident Investigation, and more*

User feedback from 3-month pilot across 40+ companies:

- *I already enjoy utilizing Gensuite in my daily work life... I really like U Connect! I foresee many uses in the field for it.*
- *Besides inspections, we see it as a way to accomplish incident investigations remotely. Given that we have 55 remote sites, this tool is perfect for us.*

Remote Expert | Desktop



Field User | Mobile

What Our Subscribers Are Saying



"First and foremost, thank you for making this (Gensuite COVID-19 Exposure Tools) a priority in your organization. It will benefit not just my company, but others as well!"

Tanya Moore
EHS Systems Admin, Perrigo



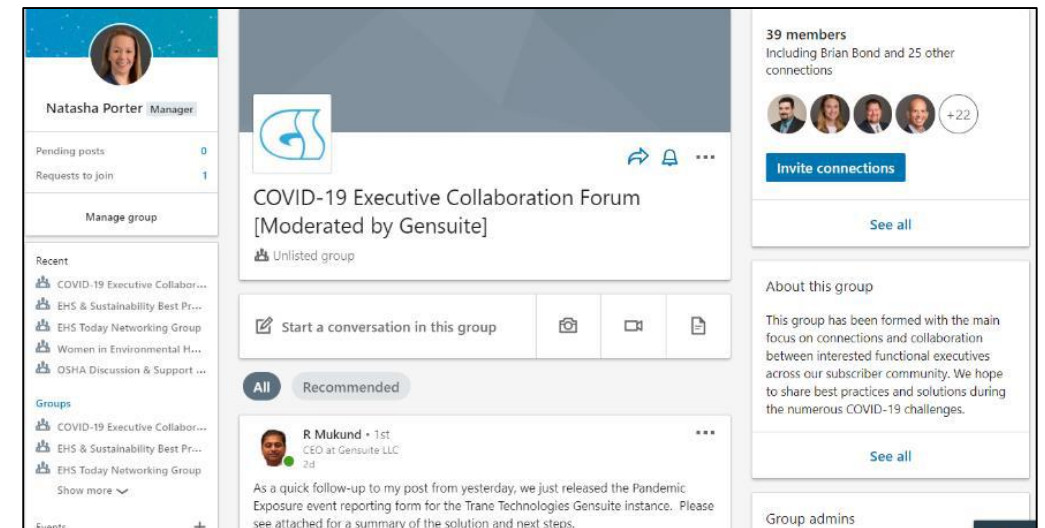
"As COVID-19 first began to spread globally, our executive leadership team came to us and said, 'We have no internal system to track not only confirmed cases but suspected cases.' At Trane, we want to be as transparent as possible, and respond to cases as quickly as possible, in our plants and service locations. That is why we partnered with the Gensuite team to assist in the development of Pandemic Exposure tools.

Eric Rankin
VP of EHS, Trane Technologies



I had the opportunity to sit in on the Gensuite call last Thursday and was very impressed with all the work you are doing in regards to helping your clients, including Amphenol to manage this process. Additionally, being able to utilize Gensuite as the host for regulatory updates is extremely helpful!

Martha Coopersmith-Grey
Director of EHS and Product Stewardship, Amphenol ICC





Q&A and Next Steps

Drew Ross | Business Development Manager
Gensuite LLC

drew.ross@gensuitellc.com

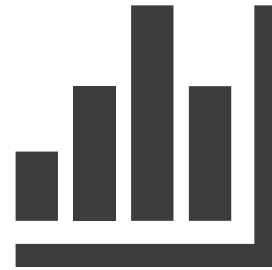
NAEM'S Special Resources for COVID-19



Webinars



Publications



Quick Polls



Drop-In Calls

New Reports from NAEM



- How COVID-19 is Impacting Corporate Sustainability Agendas
- Impact of COVID-19 on EHS
- Trends in Emerging Tech for EHS&S
- 2020 EHS & Sustainability Salaries
- 2020 Staffing, Structure & Budgets

All available @ NAEM.org/research



Tuesday, October 20 – Thursday, October 22
11:00 – 4:00 pm ET

Focused on the management challenges of leading EHS&S

- Multiple tracks tailored to meet your professional needs
- Special emphasis on the challenges of managing in a COVID-19 world
- Interactive sessions designed for you to engage with your peers
- Small group networking discussions to connect and solve problems

***Utilizing best-in-class technologies
to ensure a high-value virtual experience***



Great Webinars!

Nov 5



***Creating a Technology
Road Map for EHS&S
Excellence***

Date	Topic	Presented By
29-Jan	Show Me the Money: Communicating Your Successes in Reducing EHS Costs	NAEM, Various
26-Feb	EHS&S Salary Report Results	NAEM
19-Mar	Insights from a 5-Year Journey in Global EHS Transformation	ProcessMAP
26-Mar	Top Emerging Regulatory Issues & A Corporate Approach to Management	APTIM
2-Apr	Trends in Emerging Tech for EHS&S	NAEM
16-Apr	Artificial Intelligence for EHS Compliance and Sustainability Management	Locus Technologies
23-Apr	Leveraging Technology to Complete EHS Tasks Remotely*	Woodard & Curran
30-Apr	Benchmarking Staffing, Structure and Budgets of EHS & Sustainability Functions	NAEM
14-May	Strategic Road Map to Navigating the Path to a New Normal*	GHD
28-May	How to Build Corporate Social Responsibility in Your Supply Chain	EA Engineering
2-June	Emerging From a Long Winter: Things Your Business Needs to Know to Manage Risk in a Post-COVID-19 World*	Cority
11-Jun	Effectively Incorporating Sustainability Into Your Business	Hodgson Russ LLP
1-Jul	A First Look at the Impact of COVID-19 on EHS Functions	NAEM
30-Jul	Virtual Audits: Planning is Key*	convergence consulting
19-Aug	Integrating Human and Organizational Performance into Your Management System	Gensuite
10-Sep	Why Ergonomics? Communicating the Value to Business Stakeholders	Velocity EHS/Humantech
15-Sep	Excelling in the New Normal: Making the Business Case for Resources to Manage COVID-19 and EHS Long-Term*	EY
24-Sep	How COVID-19 is Impacting Corporate Sustainability Agendas	NAEM

More to be announced!

Visit our website for updates, more information & registration



Connect with NAEM!

- Online: www.naem.org
- Via email: research@naem.org
- Social media:
 - Twitter: [@NAEMorg](https://twitter.com/NAEMorg)
 - Facebook: www.facebook.com/NAEM.org
 - LinkedIn: <https://www.linkedin.com/company/naem>



Thank you for Attending!



A recording will be available in 3-4 days. You will receive an email once it's posted to our site.



Have a safe & healthy day!