



Birds, Bats and Bees: Using Ecology to Support Corporate Sustainability Metrics

July 22





LEARN

BENCHMARK

NETWORK

***A Professional Community
Where You Get & Share Solutions***

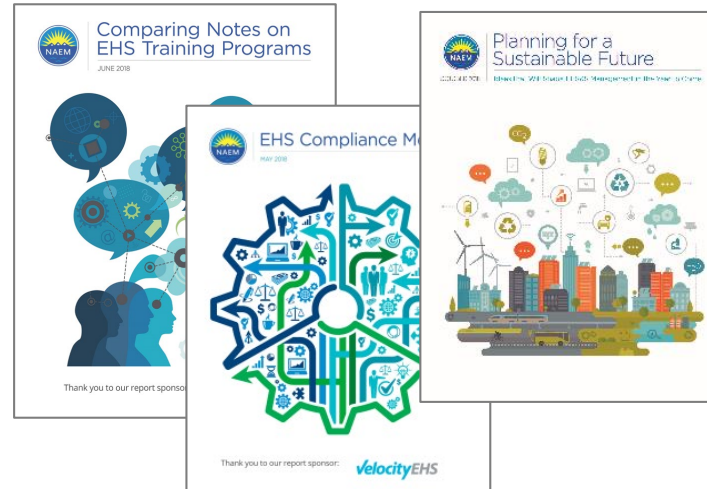


Delivering Knowledge & Professional Wisdom

Peer Conferences



Research Insights



Targeted Networking



***Actionable strategies to empower
EHS&S leaders to make an impact***



120
Corporate
Members

4,200
Individual
Members

60
Affiliate
Members

Reaching an
EHS&S
Community of
25K+

***NAEM Connects
EHS & Sustainability Leaders***



Today's Speaker

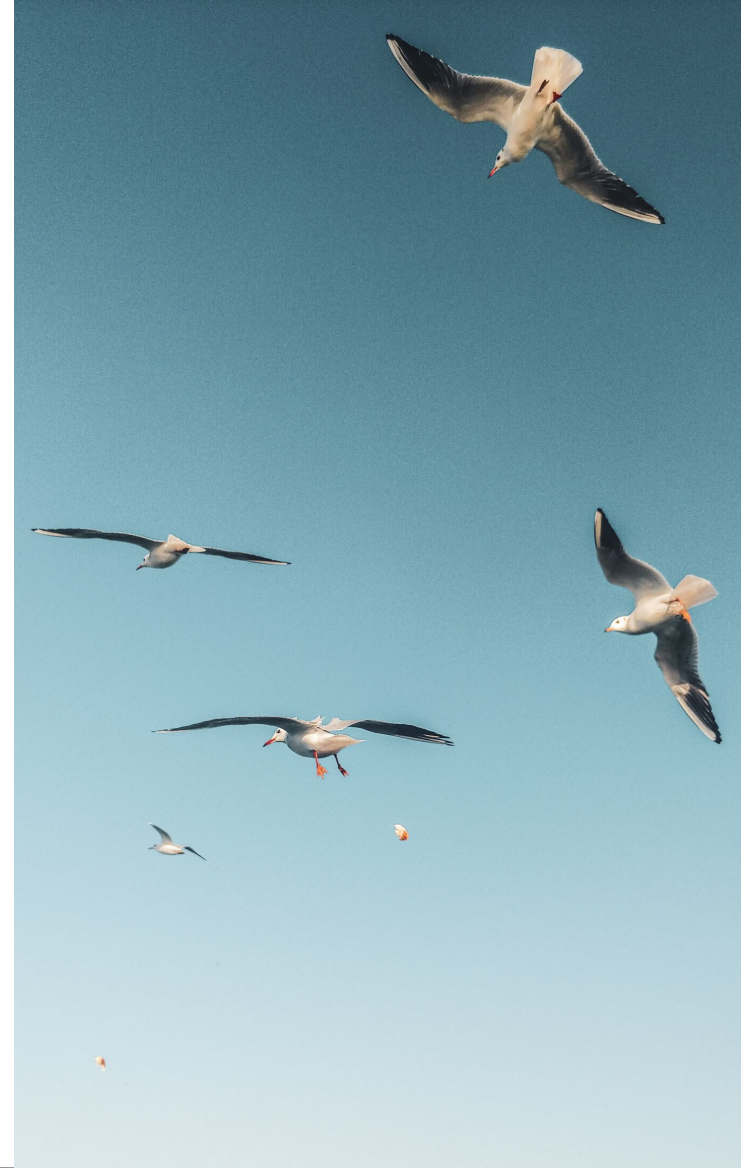


William Medlin
Principal Scientist
Woodard & Curran

Birds, Bats and Bees –

Using Ecology to
Support Corporate
Sustainability Metrics

*Presented to National
Association for EHS&S
Management (NAEM)*



July 22, 2021

Woodard & Curran

William L. Medlin, PWS, ENV SP

COMMITMENT & INTEGRITY DRIVE RESULTS

TODAY'S AGENDA

1

Introduction to ESG and CSR

2

Why does ecology matter for sustainability?

3

Case Study: Southern Company, USDA-NRCS, and Pollinators

4

What drivers exist?

5

What tools are available for companies?

6

Tracking progress

7

Q&A

ESG is Getting Heightened from Multiple Stakeholders



SOURCE: <https://www.visualcapitalist.com/inside-esg-ratings-how-companies-are-scored/>

CSR is Still Going Strong, But Has Evolved

Corporate Social Responsibility

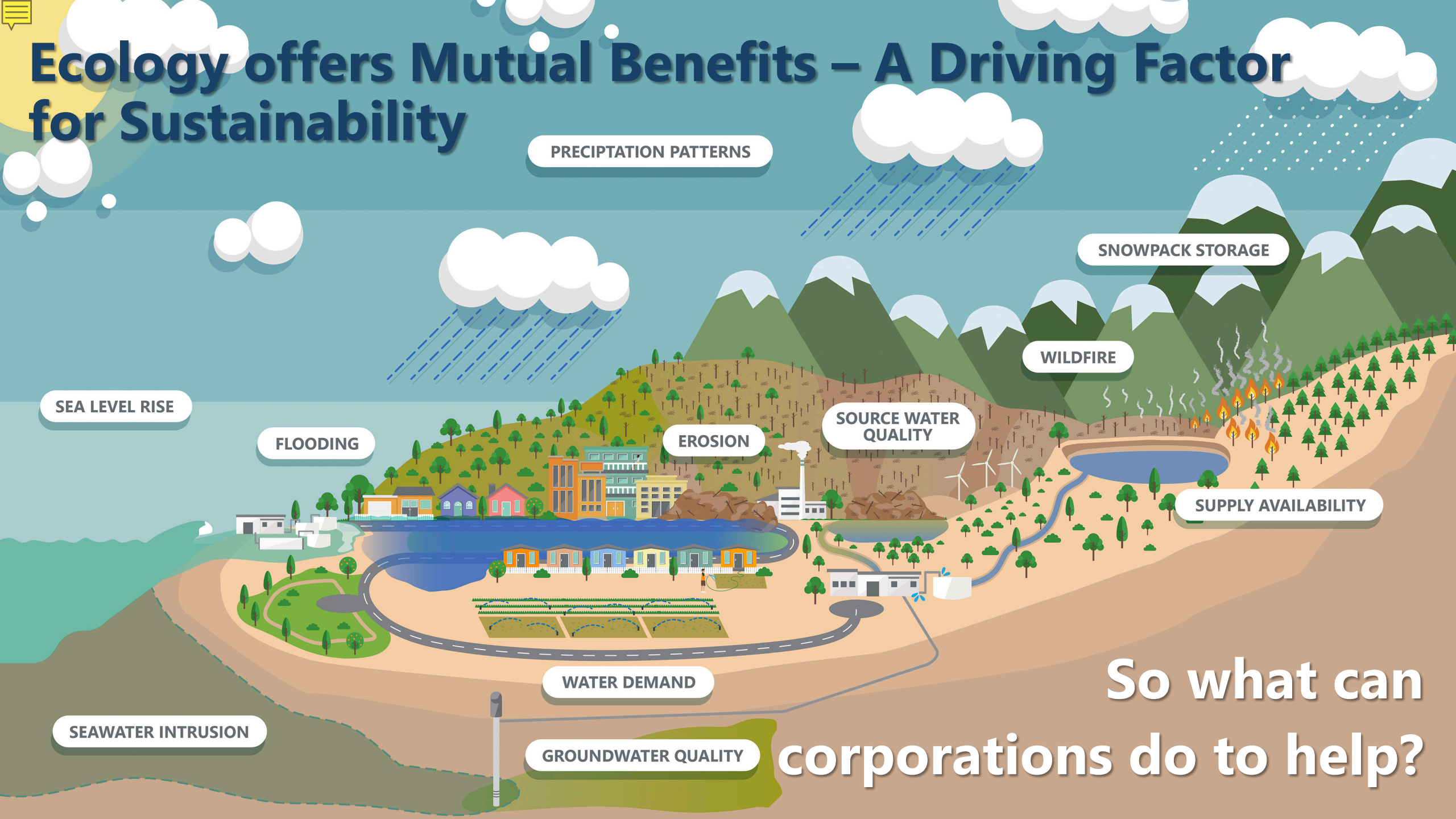


COMPLIANCE + CONVICTION = CORPORATE SOCIAL RESPONSIBILITY

POLL QUESTION #1

**Is your company operating in
the *Zone of Compliance* or
Zone of Conviction?**

Ecology offers Mutual Benefits – A Driving Factor for Sustainability



PRECIPITATION PATTERNS

SNOWPACK STORAGE

WILDFIRE

SEA LEVEL RISE

FLOODING

EROSION

SOURCE WATER QUALITY

SUPPLY AVAILABILITY

WATER DEMAND

SEAWATER INTRUSION

GROUNDWATER QUALITY

So what can
corporations do to help?

Case Study:

Enhancing biodiversity through partnerships and federal funding.

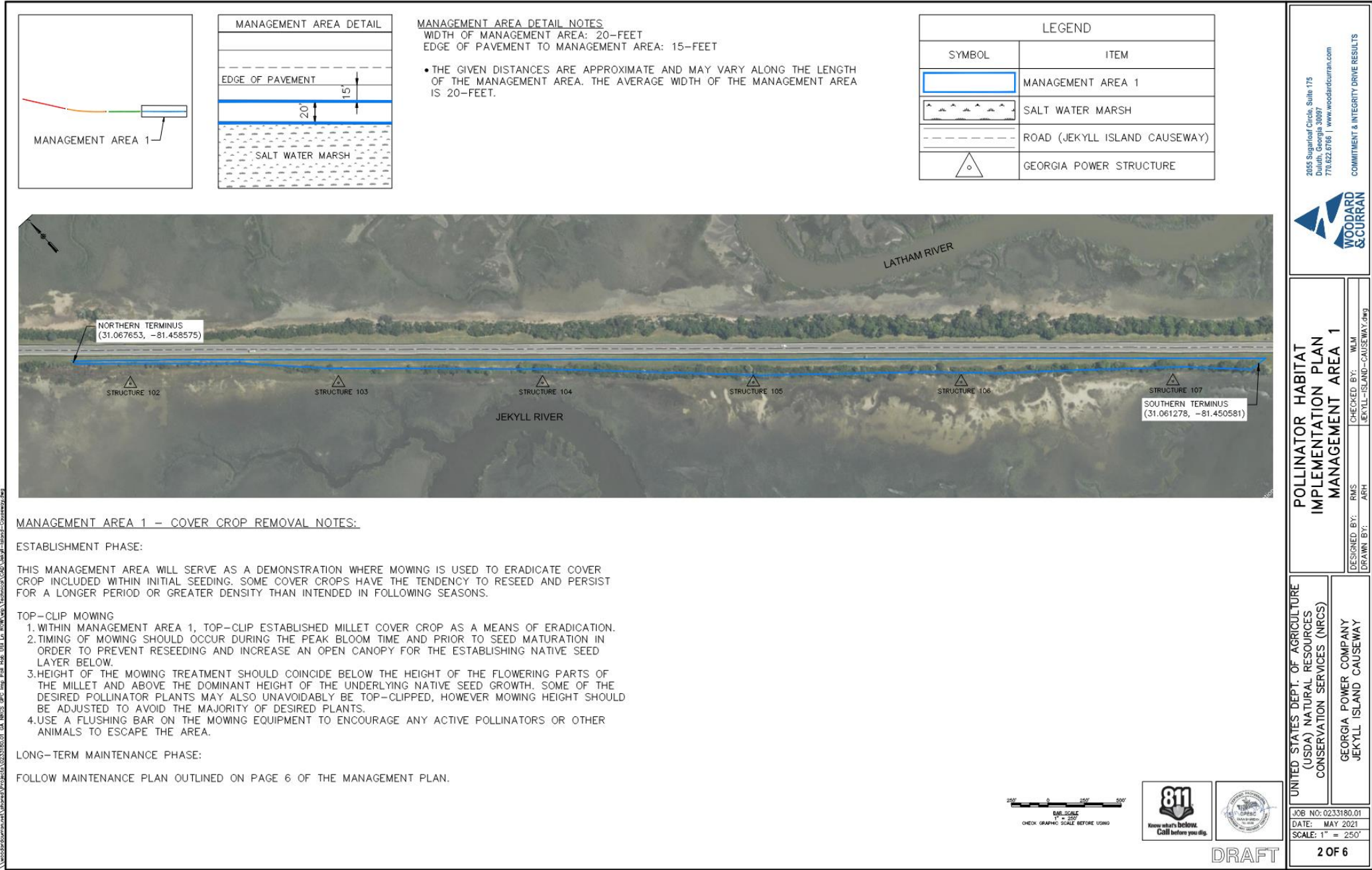


- Technical assistance grant program (2020 - 2024)
- Project Title: Implementing Pollinator Habitat on Utility Line Right-of-Ways in Georgia
- Supports both NRCS conservation goals and GPC corporate sustainability goals

STEP 1: Site Selection



STEP 2: Develop the plan



STEP 3: Ready, Set, GO!



STEP 4: Develop Technical Resources



North Carolina Environmental Right-of-Way Management Plan

Prepared by Woodard & Curran
2055 Sugarloaf Circle, Suite 175
Duluth, GA 30097
888-239-6279



United States Department of Agriculture

643-CPS-1

Natural Resources Conservation Service

CONSERVATION PRACTICE STANDARD

RESTORATION OF RARE OR DECLINING NATURAL COMMUNITIES

CODE 643

(ac)

DEFINITION

Restoring, conserving, and managing unique or diminishing native terrestrial and aquatic ecosystems.

PURPOSE

This practice is applied to—

- To return aquatic or terrestrial ecosystems to their original or usable and functioning condition and to improve biodiversity by providing and maintaining habitat for fish and wildlife species associated with the ecosystem.

CONDITIONS WHERE PRACTICE APPLIES

Sites or areas that once supported or currently support a unique, dwindling, or imperiled native plant and animal community.

CRITERIA

General Criteria Applicable to All Purposes

All necessary local, state, and federal permits shall be obtained by the landowner (or designee) prior to the restoration.

Methods used shall be designed to protect the soil resource from erosion and compaction.

Invasive plant and animal species and noxious weeds shall be controlled. When possible, control will be limited to that necessary to control undesirable species while still protecting habitat that benefit native pollinators and other fish and wildlife species that depend on the site for food, cover, and water.

Undisturbed areas shall be conserved on a sufficient extent of the area to sustain disturbance-intolerant species. In general, no more than 1/4-1/3 of small (<50 acres), isolated habitat patches will be disturbed in a given year.

Management practices and activities are not to disturb cover during the primary nesting period (April 1 – August 31). Exceptions may be granted by the State Biologist for periodic burning or mowing when necessary to maintain the health of the plant community.

Plant species and seeding rate specifications will be prepared to achieve desired habitat condition. See 327 Conservation Cover Job Sheet and CP-4 Seeding plan.

Only high quality and ecologically adapted plant materials will be used. When feasible, only local ecotypes will be used.

NRCS reviews and periodically updates conservation practice standards. To obtain the current version of this standard, contact your Natural Resources Conservation Service State office or visit the Field Office Technical Guide online by going to the NRCS website at <https://www.nrcs.usda.gov/> and type FOTG in the search field.
USDA is an equal opportunity provider, employer, and lender.

NRCS, GA
October 2016

STEP 5: Training



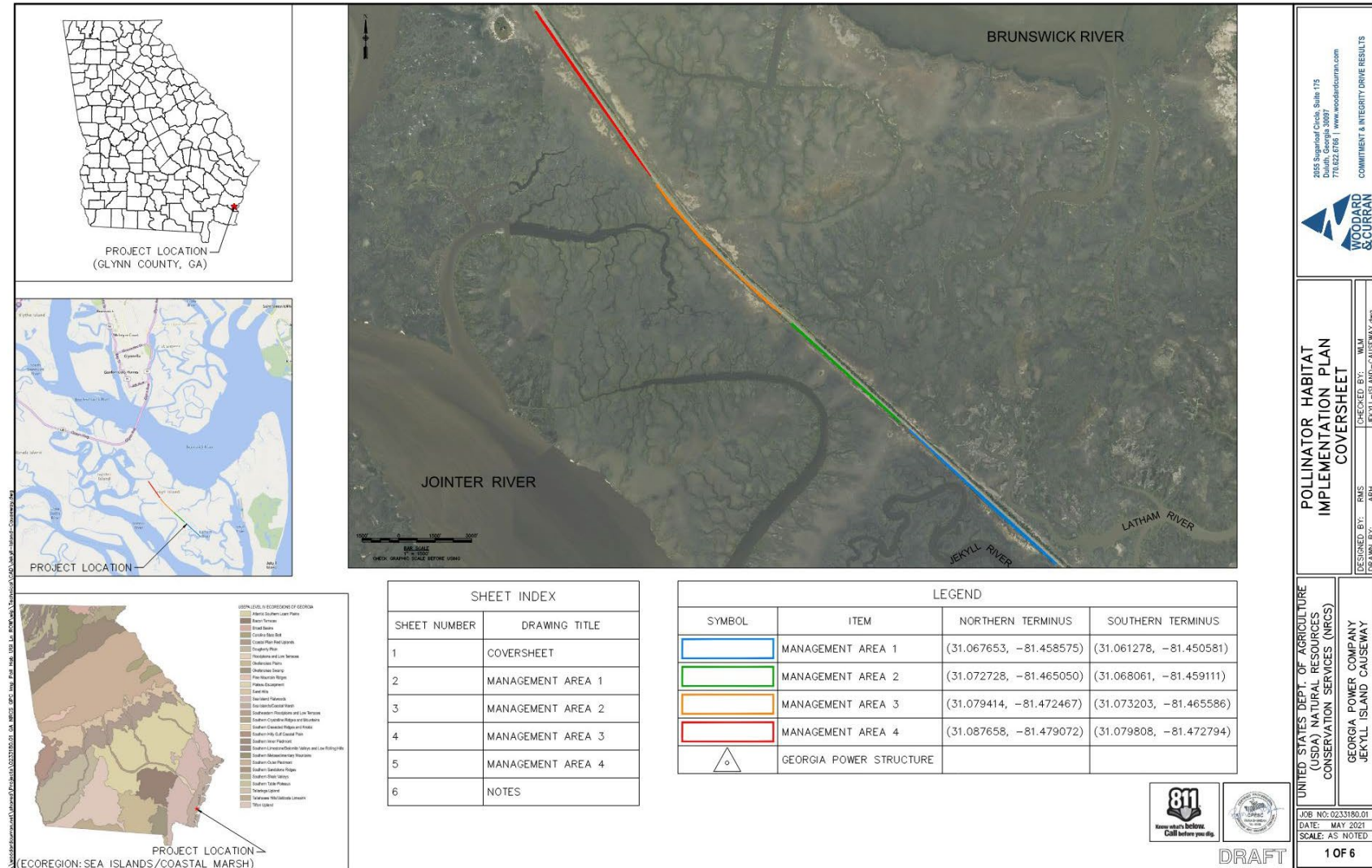
Microsoft Teams



Case Study:

Enhancing biodiversity through partnerships

- Jekyll Island causeway project
- 6 miles transmission line replacement resulted in 6 miles of pollinator plantings
- Team is working to find new ways to manage the habitats
- 4 different management areas established



Case Study:

Enhancing biodiversity through partnerships

Currently, plan implementation is underway



Terrapin conservation

1



Quarterly monitoring
site visits are on-going

2



Pollinators are
growing!

3

Case Study: Summary

Environmental

- Enhanced biodiversity and conservation
- Managing special status species
- Contributing to the state of the science of ecosystem management



Social

- Environmental awareness
- Collaboration with Jekyll Island Authority to benefit local ecology
- Training and education



Governance

- Leadership compensation aligns with project goals





POLL QUESTION #2

Has your company ever developed and implemented an ecological enhancement project as part of the sustainability program?

External Drivers for Using Ecology

- Public relations
- Operations
- Supply chain



What tools are in the toolbox?

- Real estate
- Natural resources
- Technical capabilities
- Funding



Tracking Progress – Guidance Frameworks



Tracking Progress – Formal Programs



Key Take-aways for Corporate EHS&S Managers

- Core values alignment
- Is leadership interested?
- Flexibility
- Funding and affordability
- Technical details
- Tracking
- Time to act is now





POLL QUESTION #3

Do you have any concerns or reservations about using ecological enhancement projects to support your corporate sustainability program?



Questions?

Contact



woodardcurran.com

William L. Medlin, PWS, ENV SP
Principal Scientist

wmedlin@woodardcurran.com 

770.679.7032 

SOLVE-ITs

➤ Maximizing Sustainability Reporting

- August 11, August 18
- IMPACT: August 26-27
- Sept. 1, Sept. 8

*Collaborating with Peers
& Industry Experts to
Solve EHS&S
Management Challenges*



Great Monthly Webinars on EHS&S Management



What to Expect When Expecting an
Environmental Project
August 12



Linking Employee Wellness and a
Culture of Health with ESG Reporting
September 9



The Role of EHS&S Performance
Validation in Risk, Resilience and
Sustainable Financing
September 23



Upcoming Conferences

**IMPACT21**
Sustainability Impact Conference
VIRTUAL CONFERENCE | AUGUST 25-26, 2021



Sustainability Impact
Aug 26-27
Virtual

**FORUM21**
EHS & Sustainability Management Forum
TUCSON, ARIZONA | OCTOBER 19 - 22, 2021



EHS&S Management Forum
Oct 19-22
Tucson, AZ





Thank you for Attending!

**A recording will
be available in 3-4
days. You will
receive an email
once it's posted
to our site.**

**Have a safe &
healthy day!**